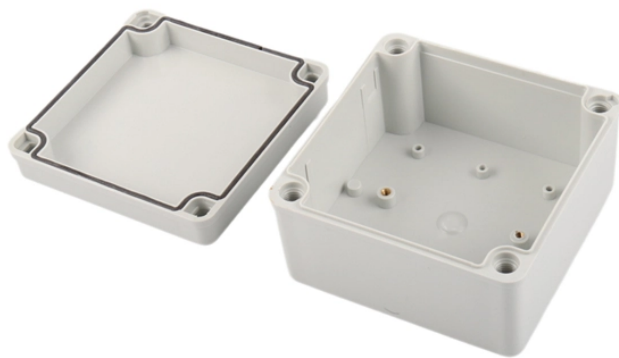


## How to install the wire mesh in an indoor electrical distribution box



### Overview

Whether you're an electrician or a DIY enthusiast, this guide will provide you with all the necessary steps to complete a DB installation efficiently and safely. Learn how to install a distribution box safely and correctly. Covers wiring, placement, standards, and expert tips for a compliant setup. Accessibility is one of the most. Installing wire mesh correctly ensures your project lasts for decades while maintaining safety standards. Whether you are working with welded wire mesh for concrete reinforcement or setting up hexagonal wire mesh for garden fencing, this comprehensive guide provides professional techniques used by. In modern electrical systems, cable distribution boxes (also known as electrical distribution boxes or distribution boxes) play a crucial role as the key hub for managing, distributing, and protecting circuits. It includes the general requirements for all wiring methods included in the NEC, but does not apply to twisted-pair cable and coaxial cable (covered in Chapters 7 and 8) unless Article.

## How to install the wire mesh in an indoor electrical distribution box



First of all, you need to have a simple understanding of the definition of a distribution box, and make it clear which kind of distribution box you want to install. This is important to properly install it.



Learn how to install a distribution box safely and correctly. Covers wiring, placement, standards, and expert tips for a compliant setup.



Whether you're an electrician or a DIY enthusiast, this guide will provide you with all the necessary steps to complete a DB installation efficiently and safely.



Electrical box installation is regarded as easy work—more like carpentry than electrical wiring. But there are still some common errors that do-it-yourselfers frequently make. Follow these ...



Article 300 is primarily concerned with how to install, route, splice, protect, and secure conductors and raceways. How well you understand and apply the requirements of this article will usually be evident ...



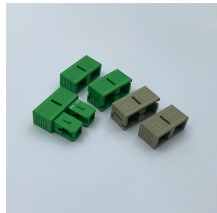
It outlines 4 steps: 1) Pre-installation preparation including reviewing plans and ensuring safety, 2) Mounting panels and running wiring, 3) Installing circuit breakers or fuses, and 4) Terminating ...



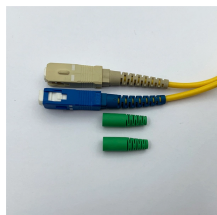
This article provides a detailed overview of the entire process of installing a distribution box, from pre-installation preparation to post-installation maintenance, and summarizes common ...



Master the art of wire mesh installation with our expert step-by-step guide. Learn the essential tools, proper cutting techniques, safety rules, and fastening methods for a perfect, durable result.



Secure electrical boxes directly to the concrete wall with adhesive or a mechanical fastener. Once securely fastened to the wall, fill the extra space around the box with expanding foam.



Ideally, wire groups are installed in layers and wires are bent at right angles to buses or breakers. Label short sheathing sections (slugs) to indicate which circuits wires serve.

## Contact Us

For more information, pricing, or custom energy solutions, please contact us:

Website: <https://www.gdroofing.co.za>

Email: [sales@gdroofing.co.za](mailto:sales@gdroofing.co.za)

Phone: +27 72 418 9365

Address: 22 Electron Avenue, Isando, Johannesburg, 1600, South Africa

This document is for informational purposes only. Specifications subject to change without notice.

