

## How to make a cable tray fixing bracket using angle iron



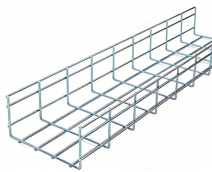
### Overview

Learn how to fabricate a durable metal bracket using basic angle iron and welding techniques. This step-by-step guide shows you the perfect cuts and welds to create a secure post holder that can handle heavy loads for any DIY project. Let's do a new job again today. Which can make your work easier. This design has been around for ages. I didn't see it on the site so I thought I'd do a quick instructable and snap a few pictures. The. Then anchor some angle iron to the masonry at several points on either side and use some heavy duty unistrut underneath the tray to support it at maybe 4 or 5 points along its length.

## How to make a cable tray fixing bracket using angle iron



The document outlines the procedure for installing cable trays, including essential tools, equipment, and safety measures. It emphasizes the importance of thorough material inspection and proper ...



Here's an old school corner clamp fixture used for welding 90\* tubing and angle iron. This design has been around for ages. I didn't see it on the site so I thought I'd do a quick instructable and snap a few ...



Wall support brackets (Figures 12) are an effective way of fixing any width of cable ladder or cable tray, running either vertically or horizontally, to a vertical support.



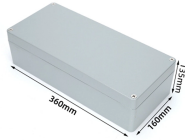
Which can make your work easier....



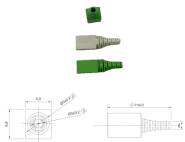
Learn about the different types of cable tray support, including rod supports and angle steel supports, and how to choose the right one for your electrical installation needs.



With these 100 ideas and a little bit of creativity, you can turn ordinary metal angle iron into extraordinary projects that will impress your friends and family. Whether you're looking to spruce ...



Check out this guide for five great do-it-yourself project ideas using angle iron to inspire your next pursuit.



Learn how to fabricate a durable metal bracket using basic angle iron and welding techniques.



Then anchor some angle iron to the masonry at several points on either side and use some heavy duty unistrut underneath the tray to support it at maybe 4 or 5 points along its length.



- The materials cable trays can be made from, including steel, aluminum, and fiber reinforced plastic. - The steps for installing cable trays, which include marking, cutting, drilling holes, installing supports, ...

## Contact Us

For more information, pricing, or custom energy solutions, please contact us:

Website: <https://www.gdroofing.co.za>

Email: [sales@gdroofing.co.za](mailto:sales@gdroofing.co.za)

Phone: +27 72 418 9365

Address: 22 Electron Avenue, Isando, Johannesburg, 1600, South Africa

This document is for informational purposes only. Specifications subject to change without notice.

