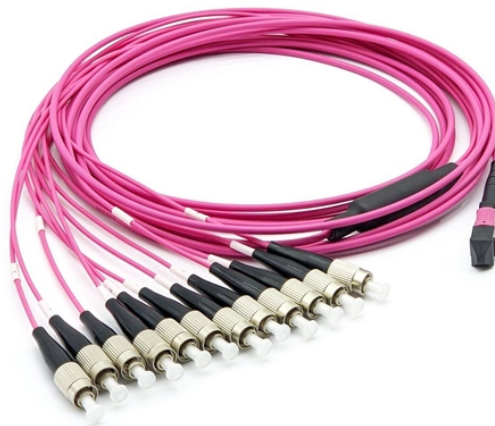


How to make a parallel bend in a cable tray



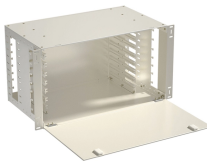
Overview

Simply make the appropriate cuts in the side wall of the tray you are joining a length to, bend down the side wall, and attach a TX bracket either side. Riser links must always be installed in pairs, one on each side of the tray. You can buy a manufactured 90 degree bend or make one on a cable tray bending machine but in this video I show you how. This involves a few essential steps to ensure a successful bending process. The first step in preparing the tray is to cut the side wall. The ET 'EzyTray', ET3 and ET5 are designed to work how you want to work around your project. Unlike the CT range of tray, the ET range does not come with pre-made fittings, rather, it uses accessories that allow you to bend, rise, or join straight lengths together either in series or to fabricate a bend. Depends on the type of cable tray, you can buy 90° tray fittings or use a speed square with a straight edge and a grinder or skill saw to cut 45° cuts. The most basic premise is to follow code. Familiarize yourself with local.

How to make a parallel bend in a cable tray



Students trading aid on how best to put an internal 90 degrees bend in steel cable tray. Includes a full demonstration on how bend steel cable tray using a crimping to.



The assembly guide below will help the cable tray installer make the bends and others without difficulty even he had never installed wire mesh cable trays before.



Here''s how to create a seamless rolling 90-degree bend in cable tray! ☐☐ This guide walks you through each step, from marking and cutting to forming and joining.



When it comes to conduit bending and cable tray running, a hack job may not even pass inspection. Avoid being labeled as less than honorable by doing it right the first time.



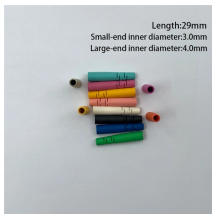
The document provides instructions for forming various bends and joints in electrical trunking and cable trays. It describes: 1) How to mark and cut a right-angle internal bend in a section of trunking, ...



Simply make the appropriate cuts in the side wall of the tray you are joining a length to, bend down the side wall, and attach a TX bracket either side. Riser links must always be installed in pairs, one on ...



Now you know that 160mm in 100mm cable tray will be 90°. So you can divide the 160mm by any number you want to get as many bends as you want. Eg. Divide 160mm / 8 = 20mm ...



When we fabricate the bends in the field by cutting it and bolting it, then is it still possible to make the bends of different radius for the same 6" width of tray?



In over 40 years of being in the industry I have never seen such flimsy tray, the tray I worked with had a strengthening curved lip so you had to use a hack saw or grinder to make a bend



Discover the best techniques and tools to bend cable tray easily and efficiently. Learn step-by-step instructions and tips from industry experts.



The document provides instructions for forming various bends and joints in electrical trunking and cable trays. It describes: 1) How to mark and cut a right-angle ...

Contact Us

For more information, pricing, or custom energy solutions, please contact us:

Website: <https://www.gdroofing.co.za>

Email: sales@gdroofing.co.za

Phone: +27 72 418 9365

Address: 22 Electron Avenue, Isando, Johannesburg, 1600, South Africa

This document is for informational purposes only. Specifications subject to change without notice.

