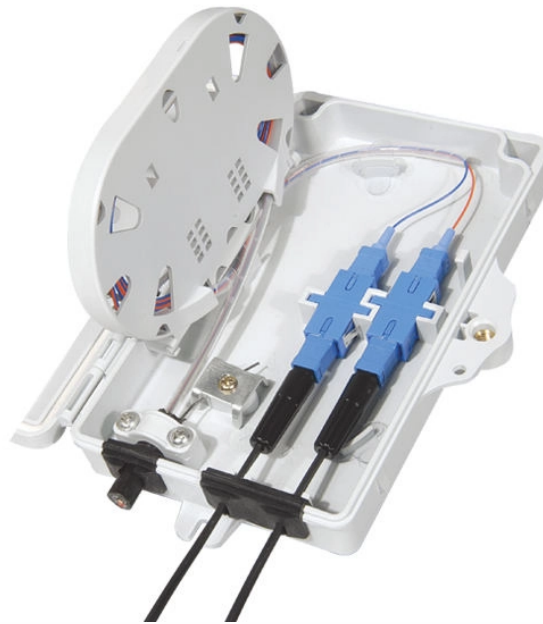


How to measure the cable at the top of the distribution box



Overview

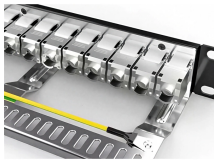
The Cable Distance Meter is capable of measuring up to six cables (provided they are within range). Mechanical Cable Length Counters: Cable length counters. how do you safely measure the height of above ground electrical wires?

Fiberglass painters pole marked off in feet. This guide covers copper and aluminum conductors from No. 14 AWG though 1000 kcmil, insulated for operation from 600 volts though 35 kilovolts. Furthermore, these methods are prone to inaccuracies, particularly when dealing with.

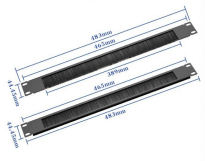
How to measure the cable at the top of the distribution box



NEC Section 110.26 spells out three dimensions for this space. The working space must extend at least 36 inches deep, measured outward from the front of the panel. That 36-inch figure applies to ...



With the right technique and understanding, a multimeter can be cleverly employed to estimate cable length with reasonable accuracy. This method relies on the principles of electrical ...



The Cable Distance Meter is capable of measuring up to six cables (provided they are within range). This is accomplished by standing directly beneath the cable and aligning longitudinally (looking down ...



The Cable Distance Meter is capable of measuring up to six cables (provided they are within range). This is accomplished by standing directly beneath the cable and aligning longitudinally (looking down ...



It is necessary to have adequate clearance between the uppermost cable and the top of the conduit to ensure a safe and easy pull. For straight pulls, a clearance of 1/4" is safe.



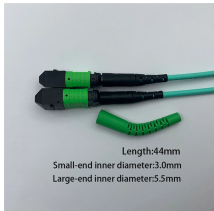
Clearance is the distance between the top of the uppermost cable in the conduit and the inner top surface of the conduit. It should be at least 10% of the conduit inner diameter or one inch for large ...



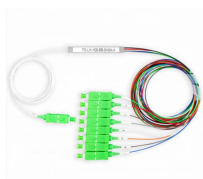
Hopefully I can explain this: 1) Set your tape measure under the wire, parallel to the wire, on the ground. Run it out 12 feet for a driveway clearance measurement.



Put the head of the hammer on the subfloor, lay the box on top of the hammer against the stud, then take the hammer and nail it in. Comes out the same every time.



Keep your inventory and the budget in check by following these key steps to measure cable length while working in the field.



To quickly and accurately measure the lengths of (relatively thick) cables that are not too long, many companies still use the old-fashioned method: they roll out the cable over the ground, often in a U or ...



Explore the types of cable measurement tools and considerations for selecting a mechanical device in this informative guide from Trumeter.

Contact Us

For more information, pricing, or custom energy solutions, please contact us:

Website: <https://www.gdroofing.co.za>

Email: sales@gdroofing.co.za

Phone: +27 72 418 9365

Address: 22 Electron Avenue, Isando, Johannesburg, 1600, South Africa

This document is for informational purposes only. Specifications subject to change without notice.

