

How to measure the level of cable tray supports



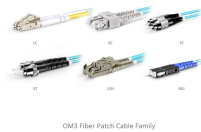
Overview

This step-by-step approach helps you determine width, depth, support spacing, and allowable load with confidence. Group by power, control, and data. Plan 20–30% spare capacity for growth. Remember separation rules for EMI and for. Calculating the cable tray support quantity is a crucial part of electrical installation projects. In complex engineering environments, the. This guide covers the critical steps, from selecting the right electrical cable tray and performing accurate cable fill calculations to managing a safe cable pull through and ensuring all bonding and grounding requirements are met. Wire Mesh Cable Tray Fill Ratio = Cross section of cable / Cross section of tray According to NEC 392. 9 (B), when using ventilated tray with multi.

How to measure the level of cable tray supports



Use this cable tray sizing calculator to check fill %, select tray size, and comply with IEC 61537 & NEC 392 with formulas, example and checklist.



Pick a span (often 1.5-3 m) and verify the uniform load rating exceeds your cable weight plus a safety factor. Check deflection limits to protect terminations and fibre.



Learn how to accurately calculate cable tray support quantities in electrical installation projects. Our guide covers methods, tools, and practical examples for effective cable tray support ...



"Calculation for Cable Tray Support 1-CTSP-293-158." v. -. A, 0. / - PLANT/UNIT . . . Safety-related? /t/. by this revision. c oZed . _ q - by this revision. I List all pages changed, by this revision. These ...



This guide covers cable ladder systems, cable tray systems, channel support systems and associated supports intended for the support and accommodation of cables and possibly other electrical ...



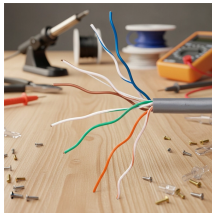
This guide covers the critical steps, from selecting the right electrical cable tray and performing accurate cable fill calculations to managing a safe cable pull through and ensuring all bonding and grounding ...



cable trays are equivalent. The mechanical and electrical characteristics, tests, certifications, overall quality management, recommendations mentioned in this technical guide only apply to our own cable ...



The document provides information on cable tray sizing including cable types and weights, tray sizes and weights, bending moment and deflection calculations to check if the tray sizes are adequate.



Once the load/foot has been determined, the weight on each cable tray support can be determined by multiplying the load/foot by the number of feet between supports.



Explore the essential cable tray support spacing requirements for safe and efficient installations. Learn NEC guidelines for perforated, ladder, and wire mesh trays.

Contact Us

For more information, pricing, or custom energy solutions, please contact us:

Website: <https://www.gdroofing.co.za>

Email: sales@gdroofing.co.za

Phone: +27 72 418 9365

Address: 22 Electron Avenue, Isando, Johannesburg, 1600, South Africa

This document is for informational purposes only. Specifications subject to change without notice.

