

How to provide support for cable tray bends



How to provide support for cable tray bends



A professional guide to installing electrical cable tray systems per NEC Article 392. Covers support, securing cables, and fill calculations.



This document provides details on installing cable trays and their support systems. It includes diagrams showing how to mount cable trays on walls using pre-fabricated flanges or channels.



Ladder Cable Trays are a type of cable tray in the shape of a ladder. They are recommended for heavy cable runs as they provide good cable support as well as adequate ventilation.



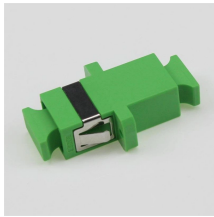
This guide covers the critical steps, from selecting the right electrical cable tray and performing accurate cable fill calculations to managing a safe cable pull through ...



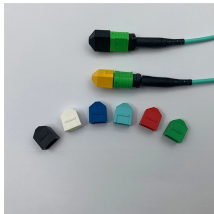
This guide covers cable ladder systems, cable tray systems, channel support systems and associated supports intended for the support and accommodation of cables and possibly other electrical ...



Cable tray is considered to be a system. It must provide continuous support for cables, and the electrical continuity of the cable tray system must be maintained.



Support of cable tray shall be located within 2ft (600mm max.) of each side of expansion splice plates. (NEMA VE2). Hold-down clips and support fitting shall ...



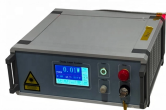
Resources For Electrical & Electronic Engineers
Cable Tray Ladder Trunking Wire Basket
Installation Guidelines What Are Cable Trays? An assembly of units/sections with associated fittings that form a ...



A cable support system consists of cable support lengths and system components, such as cable support fittings, support elements, mounting elements and system accessories. The cable support ...



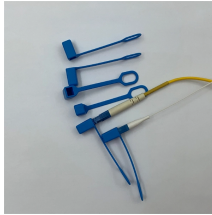
The Ladder Tray features light, rugged, tubular steel construction. It is designed for mechanical support and strain relief in long runs of cable and creates a smooth gradual bend for cable. Rail and stringer ...



Wall support brackets (Figures 12) are an effective way of fixing any width of cable ladder or cable tray, running either vertically or horizontally, to a vertical support.



Learn about the different types of cable tray support, including rod supports and angle steel supports, and how to choose the right one for your ...



Selecting the right cable tray accessories is crucial for the safety, stability, and ease of maintenance of any electrical system. This article provides a comprehensive guide on the different ...

Contact Us

For more information, pricing, or custom energy solutions, please contact us:

Website: <https://www.gdroofing.co.za>

Email: sales@gdroofing.co.za

Phone: +27 72 418 9365

Address: 22 Electron Avenue, Isando, Johannesburg, 1600, South Africa

This document is for informational purposes only. Specifications subject to change without notice.

