

How to select wires for distribution box installation



Overview

Calculate proper wire gauge, voltage drop, and ampacity for safe electrical installations. Input your electrical parameters to get accurate wire size recommendations for safe installations. In this guide, we'll break down everything you need to know to install a distribution box correctly and confidently. Choose the right box based on environment (indoor/outdoor), load capacity, and durability. Ensure safe placement: install in. Learn how to wire a distribution box step by step! This video shows real on-site footage of electrical installation, demonstrating safe and standardized wiring methods used by professionals.

How to select wires for distribution box installation



This article provides a detailed overview of the entire process of installing a distribution box, from pre-installation preparation to post-installation maintenance, and summarizes common ...



Our professional wire size calculator follows NEC standards to determine the minimum safe wire gauge for your electrical installation. Here's how to use it effectively:



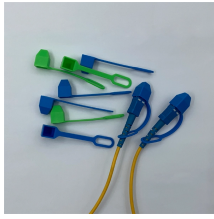
In summary, knowing what are the three types of wires used in distribution systems—copper conductors, aluminum conductors, and insulated wires—will equip you with valuable insights for making informed ...



This program determines the minimum conductor size and the best wire and cable type for a particular installation, following the National Electrical Code® wiring methods.



Learn how to wire a distribution box step by step! This video shows real on-site footage of electrical installation, demonstrating safe and standardized wiring methods used by...



Installing safe, orderly electrical boxes and cables is made easy by following the recommended electrical codes.



The document is intended to help electrical engineers and supervisors install distribution boards for electrical projects according to contract requirements and specifications.



Choosing the right wire size is critical for electrical safety and code compliance. This comprehensive guide walks you through NEC requirements, ampacity calculations, and real-world ...



Learn how to install a distribution box safely and correctly. Covers wiring, placement, standards, and expert tips for a compliant setup.



The key to the successful operation of a cable system is to select the most suitable cable for the application, make a correct installation, and perform the required maintenance.

Contact Us

For more information, pricing, or custom energy solutions, please contact us:

Website: <https://www.gdroofing.co.za>

Email: sales@gdroofing.co.za

Phone: +27 72 418 9365

Address: 22 Electron Avenue, Isando, Johannesburg, 1600, South Africa

This document is for informational purposes only. Specifications subject to change without notice.

