

How to set up a network terminal box with an additional port



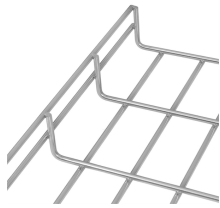
Overview

Connect a Coax cable from the wall jack to the side of the Splitter (Coax In) with a single port. There are several options available to add more Ethernet ports to your modem, including: A switch is a device that allows you to connect multiple devices to a single Ethernet port on your modem. BLACK power cord to the service box and to an electrical outlet. Make sure the ON/OFF button is pressed in. Wait about 10 minutes for your Gateway to power up. Service lights will turn solid green. Note: If the power cord is missing or. If you need to place the router somewhere else, it's cheaper to simply run an ethernet CAT6 cable, or just patch an additional single-mode fiber to the new location and place the ONT and the Router together. These are quite standard solution, The problem with replacing a PON ONT it is. With TDS fiber service, there's no need for a modem. ONTs play multiple roles in enabling and.

How to set up a network terminal box with an additional port



An optical network terminal will be installed in or outside your home, at no cost, which acts as a modem. Any wired or wireless router will work with TDS fiber service.



If you need to place the router somewhere else, it's cheaper to simply run an ethernet CAT6 cable, or just patch an additional single-mode fiber to the new location and place the ONT and the Router ...



Set up takes only minutes, as follows: Step 1: Gather your equipment (router, switch, Ethernet cables). Step 2: Power up your new switch and router. Step 3: Connect a router LAN port ...



Learn how an ONT functions in a fiber network, with installation steps, troubleshooting tips, and real-world deployment advice for...



To use a hub, simply connect it to an available Ethernet port on your modem and then connect your devices to the hub. Hubs are relatively inexpensive and easy to install, but they can be ...



Ensure connectivity to the Verizon Fios network by making sure your ONT power supply unit stays plugged in at all times. Your ONT requires electricity to operate all Verizon Fios services: If the ...



Four easy steps and you'll look like a hero. The service box (Optical Network Terminal/ ONT) brings AT& T Internet into your home. Once you locate it (may be in basement, utility closet or garage), ...



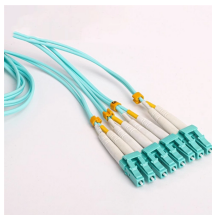
Typically the switch is built into the home router already - if it has a WAN port and multiple LAN ports, just connect the LAN ports directly to the sockets leading to all the rooms.



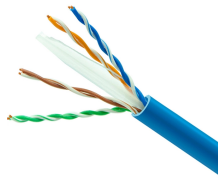
Up to 3% cash back. Set up takes only minutes, as follows: Step 1: Gather your equipment (router, switch, Ethernet cables). Step 2: Power up your ...



Typically the switch is built into the home router already - if it has a ...



Connect a Coax cable from the wall jack to the side of the Splitter (Coax In) with a single port. Connect the second Coax cable to one of the remaining ports on the Splitter (Coax Out) and then to the port ...



Learn how to set up Verizon Fios with our ultimate step-by-step guide. From equipment setup to activation, get connected quickly and easily!



If you need to place the router somewhere else, it's cheaper to simply run an ...

Contact Us

For more information, pricing, or custom energy solutions, please contact us:

Website: <https://www.gdroofing.co.za>

Email: sales@gdroofing.co.za

Phone: +27 72 418 9365

Address: 22 Electron Avenue, Isando, Johannesburg, 1600, South Africa

This document is for informational purposes only. Specifications subject to change without notice.

