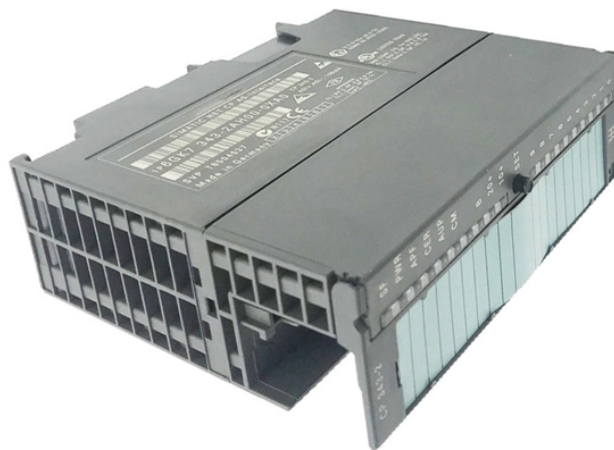


How to set up the detection IP for a photovoltaic combiner box



Overview

This piece lays out a practical, cyber-safe path to integrate combiner boxes into SCADA for utility-scale PV, C&I rooftops, and hybrid ESS. Operational data from PV assets helps keep supply secure and costs in check. How to set the PV combiner box detection IP address How to set the PV combiner box detection IP address How does the PV DC combiner box with monitoring work?

By default, the PV DC COMBINER BOX with monitoring comes with the internal communications pre-wired. It provides troubleshooting steps that can be used for the IQ Envoy, IQ Combiner, or Envoy S. By joining the Envoy's network, accessing the IP address displayed, a. more The video. To download, go to enphase. Enphase IQ Combiner 4 or 4C with IQ Gateway printed circuit board. Our DC combiner boxes offer users the possibility to integrate short-circuit and overvoltage protection, as well string monitoring solutions (I, V, T and SPD and switch isolator status), for PV systems using central inverters with PV panels in trackers and fix tilt systems.

How to set up the detection IP for a photovoltaic combiner box



View and Download enphase IQ Combiner 4 quick install manual online. IQ Combiner 4 inverter pdf manual download. Also for: Iq combiner 4c, X-iq-am1-240-4, X-iq-am1-240-4c.



A solar combiner box — also called a PV combiner box, DC combiner box, or photovoltaic combiner box — is a weatherproof electrical enclosure installed between the solar PV ...



A PV combiner box, also known as a photovoltaic combiner box, is a crucial component in a solar power system that combines the outputs of multiple solar panels into a single output.



The main objectives of this annex are to define the requirements for these PV-specific devices and to establish the testing pro-ocols necessary to ensure that their performance aligns with ...



PV DC combiner boxes are tested according to IEC-61439-2 and are constructed on the basis of the test results as well as assembled for the specific application. This ensures that each of the requirements ...



The video explains the process of manually reconnecting your Enphase Envoy S or IQ combiner to your Wi-Fi network.



This piece lays out a practical, cyber-safe path to integrate combiner boxes into SCADA for utility-scale PV, C& I rooftops, and hybrid ESS. Why SCADA integration of combiner boxes matters



The document provides comprehensive operating instructions for the Weidmüller PV DC Combiner Box, detailing its components, safety guidelines, installation procedures, and maintenance.



A complete guide to PV combiner boxes, covering structure, safety protection, monitoring, IP ratings, selection principles, and future smart trends. Learn how advanced combiner ...



The document provides comprehensive operating instructions for the Weidmüller PV DC Combiner Box, detailing its components, safety guidelines, installation ...



Enphase IQ Combiner 3 Quick Install Guide Learn about installing the Enphase IQ Combiner 3 with IQ Envoy.

Contact Us

For more information, pricing, or custom energy solutions, please contact us:

Website: <https://www.gdroofing.co.za>

Email: sales@gdroofing.co.za

Phone: +27 72 418 9365

Address: 22 Electron Avenue, Isando, Johannesburg, 1600, South Africa

This document is for informational purposes only. Specifications subject to change without notice.

