

## How to turn off the power to the primary distribution box



### Overview

Because individual devices such as receptacles, switches, and fixtures can give false readings if they are defective or incorrectly wired, the only safe way to shut off the electricity is by flipping a breaker in the service panel or subpanel. Can you turn off the main circuit breaker yourself?

Yes, you can turn off your main circuit breaker yourself, and it's a crucial skill for home safety and troubleshooting. Read the article below to learn how to shut off power before breaker box. To shut off the power to individual rooms or circuits, shut off the branch circuit. In this informative video, we'll guide you through the proper steps to turn off power at your electrical box. more [How Do I Safely Turn Off Power At The Electrical Box?](#)

Are you planning to do some home repairs and want to make sure you're working safely around electrical systems?

In. The main task at hand is shutting off the power. So, you will not need any special tool to do the job.

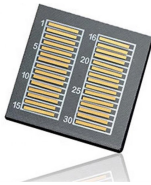
## How to turn off the power to the primary distribution box



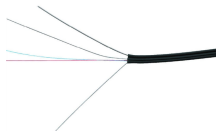
To turn off a specific circuit, find the right breaker and switch it to the "off" position. Make sure to test the device to verify the power is off before starting any work. To cut power to the entire ...



Turn off the power safely with our step-by-step guide. Learn how to turn off circuit breaker, reset tripped circuits in breaker panels, or reset a fuse box.



Learn how to turn off the power to branch circuits or to the entire home at the main circuit breaker panel or fuse box.



Essential guide to safely disconnecting residential power, detailing the difference between the main panel and the high-risk meter disconnect.



To shut off the electrical power to your entire house, locate the main electrical panel (it pays to know where this is before you need it!) and flip the main circuit breakers at the top (usually a ...



Do You Know How To Shut Off Power Before The Breaker Box? You've come to the right place, this complete guide will tell you everything.



To shut off the electrical power to your entire house, locate the main electrical panel (it pays to know where this is before you need it!) and flip the ...



Yes, you can turn off your main circuit breaker yourself, and it's a crucial skill for home safety and troubleshooting. What is a main circuit breaker? The main circuit breaker is the primary ...



In this informative video, we'll guide you through the proper steps to turn off power at your electrical box.



Because individual devices such as receptacles, switches, and fixtures can give false readings if they are defective or incorrectly wired, the only safe way to shut off the electricity is by flipping a breaker in ...



So, to add confidence to your maintenance or repair activity, it's better to cut off the primary power source before your breaker panel. Read the article below to learn how to shut off ...

## Contact Us

For more information, pricing, or custom energy solutions, please contact us:

Website: <https://www.gdroofing.co.za>

Email: [sales@gdroofing.co.za](mailto:sales@gdroofing.co.za)

Phone: +27 72 418 9365

Address: 22 Electron Avenue, Isando, Johannesburg, 1600, South Africa

This document is for informational purposes only. Specifications subject to change without notice.

