

# How to use an optical module on a router



## Overview

Pull the handle of the optical module and press the router panel with your thumb to remove the optical module. Connect the Tx and Rx optical fibers to the marked. Small Form-factor Pluggable modules (SFP module) are the workhorses of modern network connectivity, enabling flexible fiber optic or copper links between switches, routers, firewalls, and servers. Whether you're upgrading bandwidth, replacing a faulty unit, or reconfiguring your topology, knowing. The SFP+ port is a high-speed optical-to-optical signal conversion port, mainly used for 10G Ethernet and Fiber Channel network applications. It's essential to understand how to properly install and configure an SFP. The Cisco 8000 series routers utilize Cisco's Silicon One ASIC to deliver full routing functionality at higher capacities and a lower environmental footprint than any other routing silicon available. The installation process can be taken by the following instructions. To ensure device safety and facilitate routine maintenance, do not remove dust plugs from optical fiber ports before connecting them, and clearly mark TX/RX ports on. If you have a router or switch with an SFP+ interface, such as the Ubiquiti Dream Machine Pro, Mikrotik CCR series, or an OPNsense device, the XGSPON ONU Stick SFP+ can

help you bypass these limitations and connect directly to the fiber-optic network using your hardware.

## How to use an optical module on a router



In general, consumer routers will provide options to use either an SFP+ Module or an Ethernet Connection. We recommend using the available RJ45/Ethernet connection rather than ...



Install optical modules safely with ESD protection, proper handling, and dust control. Follow these steps to avoid damage and ensure network reliability.



The SFP+ optical module is a mainstream enhanced hot-swappable optical module that connects the device board to other devices and has a data rate of 10G. So how do you use SFP+ ...



If you have a router or switch with an SFP+ interface, such as the Ubiquiti Dream Machine Pro, Mikrotik CCR series, or an OPNsense device, the XGSPON ONU Stick SFP+ can help ...



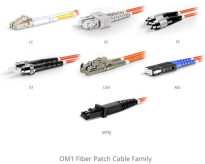
The type of switch, router, or other component determines the compatible type of SFP module. Use only Extreme Networks-certified SFP, SFP+, and SFP28 modules in the SFP port on the hardware.



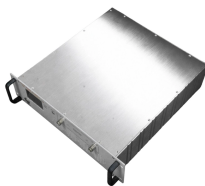
Pull the handle of the optical module and press the router panel with your thumb to remove the optical module. Insert a new optical module into the optical interface until the optical module is secured in ...



To connect an optical cable to an SFP module, use the appropriate patch cord (e.g., LC-LC, SC-LC, etc.). The patch cord must match the fibre type - single-mode or multi-mode. Once ...



The Routed Optical Networking ML service connects two DWDM optical ports with a fixed bandwidth of either 100, 200, 300, or 400G between the routers. This service is characterized ...



To extend the service life of the optical transceiver and prevent link failure, it is essential to follow the proper SFP installation and removal procedures as outlined in the tutorials above.



Let's connect a Cisco switch and router using fiber cables for faster speeds! This simple tutorial demonstrates how to insert optical transceiver modules into the sfp ports.

## Contact Us

For more information, pricing, or custom energy solutions, please contact us:

Website: <https://www.gdroofing.co.za>

Email: [sales@gdroofing.co.za](mailto:sales@gdroofing.co.za)

Phone: +27 72 418 9365

Address: 22 Electron Avenue, Isando, Johannesburg, 1600, South Africa

This document is for informational purposes only. Specifications subject to change without notice.

