

How to use the 10 Gigabit optical port on a switch



Overview

Once the 10G SFP+ switch is in place, gently insert the BiDi SFP+ modules into the corresponding SFP+ port on the switch, making sure to align the pins correctly. SFP+ stands for “Small Form-Factor Pluggable Plus” and it's a type of hot-pluggable transceiver that supports data rates up to 10 gigabits per second (Gbps). SFP+ modules come in several. This guide intends to elucidate 10G SFP ports attached to Cisco switches with ease for a reader in a technical overview, where 10G SFP ports can be put to good use. This article will enable you to hone in on which transceivers you should purchase, what the most optimal configuration would be and. Welcome to our quick start guide on setting up the 8-Port 10G SFP+ Managed Switch! In this video, we'll walk you through everything you need to know—from the basic features of the switch to its step-by-step installation and configuration. Whether you're upgrading your network for an S. more. The XS728T is a 28-port 10-Gigabit Ethernet Smart Managed Switch.

How to use the 10 Gigabit optical port on a switch



This guide aims to discuss everything concerning the 10 Gb network switches, including their features, practical uses, and benefits.



A 10 GB switch usually consists of several 10 GbE ports, usually several of which are 10 GbE ports supporting copper (RJ45) and others are fiber (SFP or SFP+). These ports provide the ...



To link an SFP port and an RJ45 port, first locate the relevant ports on your 10 GB Ethernet switch. Insert a compatible SFP transceiver module into the SFP port and ensure it is ...



This guide aims to discuss everything concerning the 10 Gb network switches, including their features, practical uses, and benefits.



Discover the power of 10G SFP ports on Cisco switches. This guide explains 10 gigabits per second capabilities, uses, and benefits for network devices and routers.



In this video, we'll walk you through everything you need to know—from the basic features of the switch to its step-by-step installation and configuration.



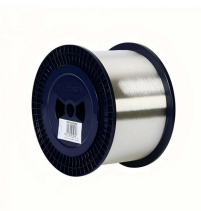
Let's dive into the details and explore how to use a 10G SFP+ switch effectively. What is 10G SFP+? SFP+ stands for “Small Form-Factor Pluggable Plus” and it's a type of hot-pluggable ...



The goal of this article is to inform readers about various port configurations of 10 GbE switches, the advantages of copper ports, and the flexibility of connected Ethernet switches in ...



When Sleep Mode is enabled on a port, the port will automatically enter a lower power mode if there is no link. When Short Cable Mode is enabled, the device will check the cable length ...



Issue these commands to enable the 10-Gigabit Ethernet and/or the Gigabit Ethernet Small Form-Factor Pluggable (SFP) uplink ports: Note: On a Catalyst 4510R Series Switch, if you ...



Discover how SFP ports support Gigabit SFP, 10G SFP+, and 100G QSFP modules. Learn to use SFP to RJ45 adapters to bridge fiber and copper networks for scalable, high-speed ...

Contact Us

For more information, pricing, or custom energy solutions, please contact us:

Website: <https://www.gdroofing.co.za>

Email: sales@gdroofing.co.za

Phone: +27 72 418 9365

Address: 22 Electron Avenue, Isando, Johannesburg, 1600, South Africa

This document is for informational purposes only. Specifications subject to change without notice.

