

How to waterproof and moisture-proof fiber optic junction boxes



How to waterproof and moisture-proof fiber optic junction boxes



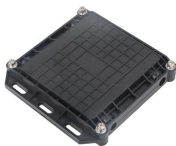
Discover waterproof fiber optic connectors (FullAXS, ODVA, OptiTap, ODC, PDLC, Mini Waterproof) with IP67/68 protection for FTTA, FTTH, and ...



Discover waterproof fiber optic connectors (FullAXS, ODVA, OptiTap, ODC, PDLC, Mini Waterproof) with IP67/68 protection for FTTA, FTTH, and outdoor networks.



Understand IP ratings and learn how to choose the right weatherproof junction box for safe, durable electrical installations in any environment.



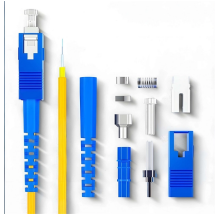
This guide aims to provide a thorough understanding of how to properly waterproof a junction box, blending practical steps with a thoughtful consideration of the underlying principles.



Compare fiber termination box types for IP65 and IP68 ratings in 2025. Find the best options for indoor, outdoor, and harsh environments with updated standards.



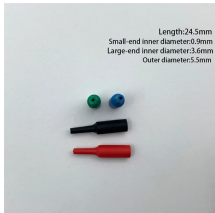
Outdoor Waterproof Fiber Optic box is made of cold-roll steel, water-proof, IP65, suitable for outdoor wall-mounted or pole-mounted applica



Discover the top 5 waterproof joint boxes for fiber optic communication. Ensure reliable protection and seamless connectivity in your network.



Understand waterproof junction box designs, IP54 vs IP67 vs IP68 ratings, and how to maintain outdoor enclosures to prevent condensation and corrosion.



Learn how to install waterproof junction boxes to protect wiring from moisture and failures. Get practical steps and safety tips—come read and improve today!



Discover the top 5 waterproof joint boxes for fiber optic communication. Ensure reliable protection and seamless connectivity in your network.



Whether used in rural broadband rollouts, urban FTTH projects, or industrial network expansions, the fiber optic joint enclosure box ensures that fiber splicing is securely housed and properly protected ...



Understand IP ratings and learn how to choose the right weatherproof junction box for safe, durable electrical installations in any environment.



Modern waterproof junction boxes feature specialized gaskets, sealed cable entries, and durable construction materials that maintain their protective qualities even in extreme conditions.

Contact Us

For more information, pricing, or custom energy solutions, please contact us:

Website: <https://www.gdroofing.co.za>

Email: sales@gdroofing.co.za

Phone: +27 72 418 9365

Address: 22 Electron Avenue, Isando, Johannesburg, 1600, South Africa

This document is for informational purposes only. Specifications subject to change without notice.

