

## How to wire a 4-circuit distribution box



### Overview

This article will provide a step-by-step guide to walk you through the process of safely wiring a 4 way junction box for your home project. Wiring a 4 way junction box is an essential part of any electrical project as it serves as a connector between four different. Welcome to our channel @Electricalgenius In this video, we'll take you through a detailed step-by-step guide on wiring a home distribution DB (Distribution Board) box. Whether you're an electrician or a DIY enthusiast, this tutorial will help you understand the fundamentals of wiring a. An electrical panel box, also known as a breaker box or a distribution board, is a crucial component of any electrical system. It serves as a central hub for distributing electricity throughout a building, ensuring that power is delivered safely and efficiently to all the required locations. These diagrams are commonly used in residential.

## How to wire a 4-circuit distribution box



Whether you're an electrician or a DIY enthusiast, this tutorial will help you understand the fundamentals of wiring a distribution box for a residential setup.



By following this step-by-step guide, you can confidently install 4 wire electrical wiring and ensure the safe and efficient distribution of power in your home or building.



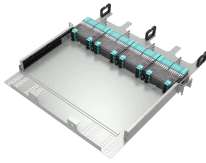
The cable or wire size, the rating of breakers, fuse, etc depends on the type of wiring, purpose, and rating of loads. It should be properly selected as per ...



First of all, you need to have a simple understanding of the definition of a distribution box, and make it clear which kind of distribution box you want to install. This is important to properly install it.



In this article, I'll teach you how to wire a Power Distribution Block (PDB) to distribute electricity from a single input source to multiple pieces of equipment in your branch circuit.



This article will provide a step-by-step guide to walk you through the process of safely wiring a 4 way junction box for your home project. Wiring a 4 way junction box is an essential part of ...



A comprehensive guide to safely managing four electrical circuits within a single switch box, focusing on efficient wire organization.



Find out how to properly wire an electrical panel box with a comprehensive diagram and step-by-step instructions.



The cable or wire size, the rating of breakers, fuse, etc depends on the type of wiring, purpose, and rating of loads. It should be properly selected as per the recommended standards and ...



Learn how to install a distribution box safely and correctly. Covers wiring, placement, standards, and expert tips for a compliant setup.



Learn how to read and understand wiring diagrams for breaker boxes to ensure proper electrical configurations and safety measures.

## Contact Us

For more information, pricing, or custom energy solutions, please contact us:

Website: <https://www.gdroofing.co.za>

Email: [sales@gdroofing.co.za](mailto:sales@gdroofing.co.za)

Phone: +27 72 418 9365

Address: 22 Electron Avenue, Isando, Johannesburg, 1600, South Africa

This document is for informational purposes only. Specifications subject to change without notice.

