

## How to wire an explosion-proof distribution box



## How to wire an explosion-proof distribution box



Today, we share a series of standard wiring procedures and precautions, with a focus on residential explosion-proof distribution boxes and their circuit configurations:



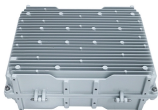
Distribution Box Installation: Location Is Everything  
Fundamental Principle : Your safest distribution box is the one that's not in the hazardous area at all. Always ask: "Does this need to be ..."



Explosion-proof distribution boxes, vital terminal distribution equipment in power systems, play a crucial role in controlling and protecting industrial electricity in hazardous environments.



Understanding explosion proof wiring box solutions is essential for industries that prioritize safety and reliability. This guide will explore the latest developments and related industries focused ...



Wire Protection: Wires should not be exposed to the air directly. For example, when connecting an explosion-proof pressurized enclosure to an audio-visual alarm line, an explosion ...



**KBH05 Series- Explosion proof Terminal Box**  
Features: 1□Application in hazardous area : Zone 0, Zone 1 and Zone 2, Zone 21 and Zone 22...more



Proper installation, wiring, and usage are critical to ensuring the safety and functionality of these systems. Below, we will discuss the correct wiring methods for an explosion-proof...



The three live wires should be connected to the upper entry of the main switch in the explosion-proof distribution box, and the neutral wire should be directly connected to the neutral ...



When installing, please follow the instructions strictly and ensure installation by a professional. 1. Open the terminal chamber cover, connect the cables through the cable gland to the ...



**Explosion-Proof Junction Boxes: Pricing, Sizes & Installation Guide** In hazardous locations where flammable gases, vapors, or dust are present, electrical safety is non-negotiable. ...

## Contact Us

For more information, pricing, or custom energy solutions, please contact us:

Website: <https://www.gdroofing.co.za>

Email: [sales@gdroofing.co.za](mailto:sales@gdroofing.co.za)

Phone: +27 72 418 9365

Address: 22 Electron Avenue, Isando, Johannesburg, 1600, South Africa

This document is for informational purposes only. Specifications subject to change without notice.

