

How to wire the main distribution box and power distribution box



Overview

In this video, you will learn: The essential components of a distribution board, including MCBs (Miniature Circuit Breakers), RCDs (Residual Current Devices), and busbars. How to safely connect incoming and outgoing cables to the DB box. The importance of earthing and. In this video, we'll walk you through the process of wiring a home distribution box with a detailed connection diagram. And all the switching and protective devices are installed in the.

Understanding the wiring diagram of an electrical panel box is essential for electricians and homeowners alike, as it allows them to troubleshoot any electrical issues, carry out repairs, or make additions to the system. 2 kV on the primary side and step it down to 120V single-phase and 120/240V split-phase for residential applications. Material preparation: Prepare the required circuit breakers, wires, wiring ties and other materials, and ensure that they meet the design drawings and installation requirements. Location determination:.

How to wire the main distribution box and power distribution box



In this video, we'll walk you through the process of wiring a home distribution box with a detailed connection diagram. Whether you're an electrician or a DIY enthusiast, this guide will help ...



Whether you're an electrician or a DIY enthusiast, this tutorial will help you understand the fundamentals of wiring a distribution box for a residential setup.



Learn how to connect a distribution box with this easy-to-follow, step-by-step guide. From tools and materials needed to common installation mistakes and solutions, this comprehensive article will ...



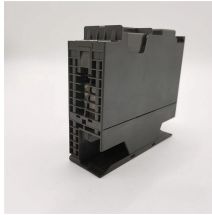
The wiring diagram for a single phase breaker box illustrates the connections and distribution of electrical power within the panel. It shows how the main breaker, branch circuits, and individual ...



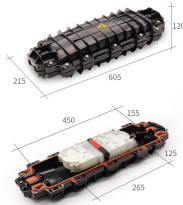
Wiring Direction: Wiring between the main circuit breaker and each branch circuit breaker in the box generally goes on the left, and the wiring out of the distribution box generally goes on the ...



These three wires enter the meter box and then connect to the main panel. In the following tutorial, we will show how to wire 120V single-phase and 240V split-phase circuit breakers and loads inside a ...



Find out how to properly wire an electrical panel box with a comprehensive diagram and step-by-step instructions.



Hey, in this article we are going to see the Single Phase Distribution Box Wiring Diagram and Connection Procedure. A distribution board or distribution box is where the main power supply is ...



electrical distribution box refers to a low-voltage distribution device that installs switchgear, measuring instruments, protective appliances and auxiliary equipment in a closed or semi closed metal cabinet ...



Learn how to install a distribution box safely and correctly. Covers wiring, placement, standards, and expert tips for a compliant setup.

Contact Us

For more information, pricing, or custom energy solutions, please contact us:

Website: <https://www.gdroofing.co.za>

Email: sales@gdroofing.co.za

Phone: +27 72 418 9365

Address: 22 Electron Avenue, Isando, Johannesburg, 1600, South Africa

This document is for informational purposes only. Specifications subject to change without notice.

