

# Huawei Fiber Optic Main-Slave Router



## Overview

Huawei's fiber to the room (FTTR) solution extends fibers to rooms and provides various gigabit Wi-Fi 6 master/slave FTTR units, all-optical components, and optical cable construction tools, enabling users to enjoy stable gigabit Wi-Fi experience in every corner of rooms. Huawei's fiber to the room (FTTR) solution extends fibers to rooms and provides various gigabit Wi-Fi 6 master/slave FTTR units, all-optical components, and optical cable construction tools, enabling users to enjoy stable gigabit Wi-Fi experience in every corner of rooms. As 200 Mbps or higher bandwidth becomes the mainstream and requirements for services such as online education, video, VR, e-Sports, and smart office increase sharply, users need Wi-Fi that supports high bandwidth, low latency, wide coverage, and multi-user concurrent access, driving operators to. Check each product page for other buying options. Need help?

Huawei OptiXstar V166a-20 is a main FTTR for the Huawei iFTTR OptiXstar F50. It uses the GPON and Wi-Fi 6 technologies to implement ultra-broadband access, with high performance and wide coverage for users. FTTR is generally

an extended FTTH (Fiber To The Home) solution. Drop optical cable terminates at ATB (Access Terminal Box). A patch cord of 1 or 2 m. As 200 Mbit/s or higher home broadband becomes the mainstream, requirements surge for home services such as online education, video, remote office, and e-sports.

## Huawei Fiber Optic Main-Slave Router



Huawei's FTTR solution extends fibers to rooms and provides various gigabit Wi-Fi 6 master/slave FTTR units, all-optical components, and optical cable routing tools, allowing users to enjoy stable gigabit Wi ...



Discover Huawei fiber optical WiFi router with dual-band AC, GPON/XPON, and CE-certified FTTH solutions for reliable, high-speed connectivity.



Discover Huawei's advanced routers, delivering blazing-fast speeds, seamless whole-home connectivity, and smart home features through the Huawei AI Life app.



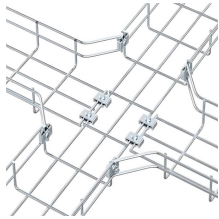
Huawei's fiber to the room (FTTR) solution extends fibers to rooms and provides various gigabit Wi-Fi 6 master/slave FTTR units, all-optical components, and optical cable routing tools.



Huawei's fiber to the room (FTTR) solution extends fibers to rooms and provides various gigabit Wi-Fi 6 master/slave FTTR units, all-optical components, and optical cable construction tools, enabling users ...



Learn what to look for in a Huawei fiber optical WiFi router, from speed and coverage to compatibility and security features.



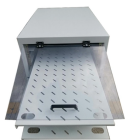
Huawei OptiXstar V166a-20 is a main FTTR for the Huawei iFTTR OptiXstar F50. It uses the GPON and Wi-Fi 6 technologies to implement ultra-broadband access, with high performance and wide ...



Huawei is a leading vendor in the FTTR market and has been quick to launch new, more advanced FTTR solutions to continue to drive the market.



Huawei's fiber to the room (FTTR) solution extends fibers to rooms and provides various gigabit Wi-Fi 6 master/slave FTTR units, all-optical components, and optical cable routing tools.



The Huawei Fiber to the Room (FTTR) solution uses Huawei's latest Wi-Fi 6 master and slave FTTRs. This solution can extend the ultra-high-speed Wi-Fi coverage to every corner at home, ...

## Contact Us

For more information, pricing, or custom energy solutions, please contact us:

Website: <https://www.gdroofing.co.za>

Email: [sales@gdroofing.co.za](mailto:sales@gdroofing.co.za)

Phone: +27 72 418 9365

Address: 22 Electron Avenue, Isando, Johannesburg, 1600, South Africa

This document is for informational purposes only. Specifications subject to change without notice.

