

Huawei OLT Cable Management Stand



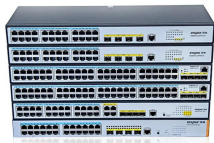
Huawei OLT Cable Management Stand



Creating a premium experience through broader, faster, and smarter access networks. Huawei SmartAX EA5800 series, including EA5800-X17, X15, X7, and X2, build ultra-broadband, green, and intelligent ...



The MA5800 multi-service access device is a 4K/8K/VR-ready OLT in the gigabit ultra-broadband era. It supports the PON/10G PON/50G PON/GE/10GE shared platform.



The SmartAX MA5800, the multi-service access device, is a 4K/8K/VR ready OLT for the Gigaband era. It employs distributed architecture and supports PON/10G PON/GE/10GE/100GE in one platform.



Huawei OptiXaccess EA5801E is a box-shaped Optical Line Terminal (OLT) with Gigabit Passive Optical Network (GPON) access, supporting both Passive ...



The MA5801 series OLT is a compact and low-density box-shaped OLT. It provides multiple fiber to the home (FTTH) solutions to meet the requirements of economical and efficient network construction.



Huawei OptiXaccess EA5801E is a box-shaped Optical Line Terminal (OLT) with Gigabit Passive Optical Network (GPON) access, supporting both Passive Optical LAN (POL) and Fiber To The ...



HUAWEI 02311DTR 40G 1310nm 10km SM QSFP+ Optical Module New Original fiber optic transceiver SFP ZTE GPON OLT Class C++ module Langzhi 4-Port Mini EPON OLT | Huawei/ZTE ONU ...



Be among the first to get access to QuickOLT.



It supports visualized management on a mobile app, simplifying O& M, even for those with limited expertise. In addition, the solution uses next-generation power over fiber (PoF) cables and plug-and ...



OLT Series: Access product manuals, HedEx documents, product images and visio stencils.

Contact Us

For more information, pricing, or custom energy solutions, please contact us:

Website: <https://www.gdroofing.co.za>

Email: sales@gdroofing.co.za

Phone: +27 72 418 9365

Address: 22 Electron Avenue, Isando, Johannesburg, 1600, South Africa

This document is for informational purposes only. Specifications subject to change without notice.

