

Huawei communication optical module models



Huawei communication optical module models



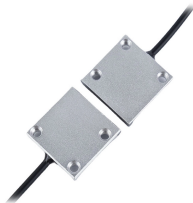
Depending on transmission rates, optical modules are classified into 400GE, 100GE, 40GE, 25GE, 10GE, FE, and GE optical modules. The higher transmission rate an optical module provides, the ...



Working Principle of Optical Modules Optical Modules (also known as Optical Transceivers) are critical components in fiber optic communication systems. As the core optoelectronic devices operating at ...



Optical Module Encapsulation Types This topic describes the encapsulation types of optical modules on WDM products



These compact optical transceivers offer a convenient and cost-effective solution for short reach interconnections in the data center, campus, metropolitan-area access and ring network,



Working Principle of Optical Modules Optical Modules (also known as Optical Transceivers) are critical components in fiber optic communication systems. As ...



In the AI era, Huawei provides a full range of GE to 800GE optical modules, featuring three major capabilities: Spanning (ultra-long transmission), Stable (ultra-high reliability), and Secure (ultra-solid ...



Huawei's main business scope is switching, transmission, wireless and data communication telecommunication products, providing network equipment, services and solutions in the field of ...



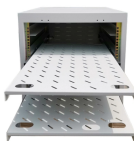
Huawei S series devices support optical modules of the following encapsulation types: CFP, QSFP+, QSFP28, XFP, SFP, eSFP, and SFP+. All optical modules are hot swappable.



In addition to the optical-to-electrical conversion function, the optical forwarding module integrates many signal processing functions, such as MUX/DEMUX, CDR, function control, performance data ...



To determine whether optical modules delivered for Huawei switches before July 1, 2013 are certified ones, contact Huawei technical support. If your optical modules are delivered after July 1, 2013, use ...



Huawei offers a comprehensive portfolio of pluggable StarryLink optical modules for data center networks, with various models providing flexible plug-and-play solutions tailored to diverse interface ...

Contact Us

For more information, pricing, or custom energy solutions, please contact us:

Website: <https://www.gdroofing.co.za>

Email: sales@gdroofing.co.za

Phone: +27 72 418 9365

Address: 22 Electron Avenue, Isando, Johannesburg, 1600, South Africa

This document is for informational purposes only. Specifications subject to change without notice.

