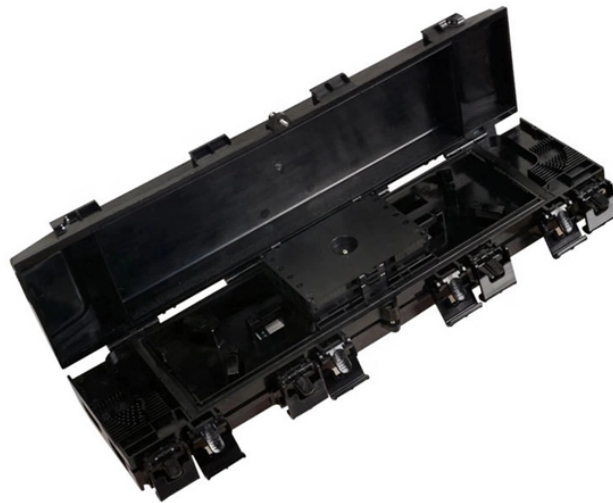


Hungarian large-core fiber G 652

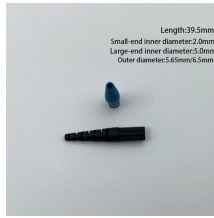


Overview

G.652 was originally developed in 1984 by ITU-T Study Group XV. Subsequently, revisions were published in 1988, 1993, 1997, 2000, 2003, 2005, 2009, 2016, and 2024 (from 1997 as Study Group 15).



Hungarian large-core fiber G 652



G.652 fiber, in its various subcategories, has evolved over the years to meet the ever-increasing demands of modern communication networks. Understanding the differences and ...



The ITU-T G.652 fibre was originally optimized for use in the 1310 nm wavelength region but can also be used in the 1550 nm region. This is the latest revision of a Recommendation that was ...



The G.655 fiber has a small, controlled amount of chromatic dispersion in the C-band (1530-1565nm), where amplifiers work best, and has a larger core area than G.652 fiber. As an ...



G.652 fiber is suitable for optical communication at wavelengths of 1310 nm and 1550 nm, making it the preferred choice for long-distance optical fiber communication systems.



“Leviton is dedicated to designing, developing and manufacturing sustainable high performance structured cabling and specialty cabling solutions.” The information contained in this document is ...



The G.652.D single-mode optical fiber is not only widely used for voice transmission, data, video, and other services, providing customers with high-cost performance and quality products, but ...



G.652 fiber is designed to have a zero-dispersion wavelength near 1310 nm, therefore it is optimized for operation in the 1310nm band and can also operate at 1550 nm. The first edition of ...



max. < max.



Discover the power of G652D single mode fiber optic. Ideal for seamless optical fiber networks and installations. Optimize your connectivity today!

Contact Us

For more information, pricing, or custom energy solutions, please contact us:

Website: <https://www.gdroofing.co.za>

Email: sales@gdroofing.co.za

Phone: +27 72 418 9365

Address: 22 Electron Avenue, Isando, Johannesburg, 1600, South Africa

This document is for informational purposes only. Specifications subject to change without notice.

