

Incorrect power output from the distribution box



Overview

Be sure that the power distribution box has sufficient power provided to it. Long cable runs can result in a voltage drop, which can be solved by using a heavy gauge wire. However, in actual applications, distribution boxes often encounter a series of problems, which not. Use a volt meter to measure voltage at the power supply and at the power distribution box. When they start tripping, overheating, or making strange noises, it's more than just an inconvenience - it's your home's cry for help. Poor quality power is power delivered to a load that includes excessive or damaging changes such.

Incorrect power output from the distribution box



Check the wiring continuity between the PDU input and the input source. Specific output circuit (s) have no power. Associated branch circuit breaker (s) is OFF. Turn the branch circuit breaker (s) ON. The ...



In summary, the distribution box may encounter a variety of problems during operation, which not only affect the normal operation of the power system, but also may bring safety hazards.



Choosing the wrong wiring system leads to power failures and high costs. Most people do not know if they need a simple or complex setup. We explain the differences between single-phase and three ...



If you just installed your own new electrical box, and things aren't working properly, it's not fun. The good news is that most issues are easy to troubleshoot, especially if you follow the steps ...



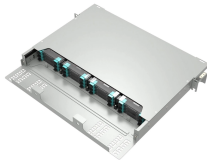
If you're not sure, it's best to contact a professional electrician for repairs. Preventive measures: Once the fault is resolved, regular inspection and maintenance of the distribution box is recommended to ...



Distribution boxes are the unsung heroes of our electrical systems, quietly managing power until something goes wrong. When they start tripping, overheating, or making strange noises, it's more ...



If the problem is not found at the the home panel location then go upstream to where the power source. Many mobile home parks are fed from a large main distribution panel at another location. Be careful ...



Be sure that the power distribution box has sufficient power provided to it. Long cable runs can result in a voltage drop, which can be solved by using a heavy gauge wire. Check wires/DIN terminal clasps ...



Learn about what power quality is and different power quality problems in the distribution network such as single phasing, voltage fluctuation, power factor, improper phase sequence, voltage unbalance, ...



The electrical breaker box, also known as a distribution panel or load center, is the heart of your home's electrical system. It's the central point where electricity enters your house and is ...

Contact Us

For more information, pricing, or custom energy solutions, please contact us:

Website: <https://www.gdroofing.co.za>

Email: sales@gdroofing.co.za

Phone: +27 72 418 9365

Address: 22 Electron Avenue, Isando, Johannesburg, 1600, South Africa

This document is for informational purposes only. Specifications subject to change without notice.

