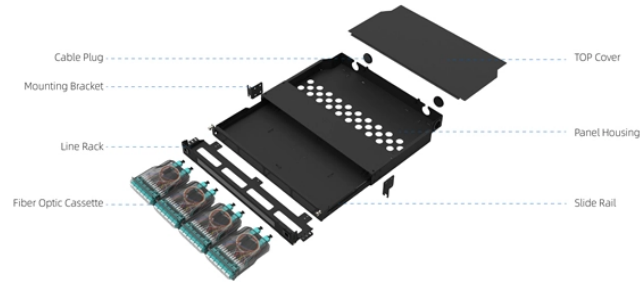


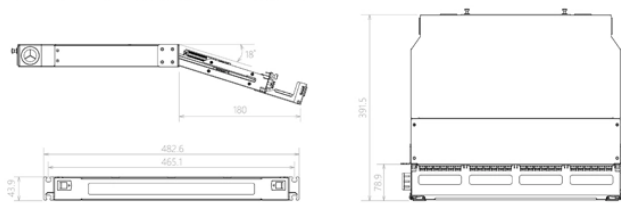
## Inkwell Channel Cable Tray

Component Diagram

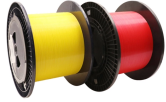


Key dimensions

Maximum number of cores	Product size (including modules and adapters)	Standard color code
96	482.6*391.5*43.8mm	RAL9005



## Inkwell Channel Cable Tray



Unlike other instrumentation channel tray, the KwikSplice cable channel can be cut and spliced at any point along the tray, simplifying field modification. Plus, it is available with perforated holes along the ...



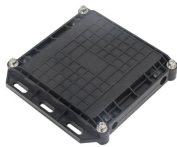
Channel cable trays are fully enclosed and they can protect cables from heat, dust and water. Electro galvanized, hot-dipped galvanized surface makes channel cable trays resist corrosion, rust and ...



Fabricated in numerous styles (wiremesh, ladder, ventilated trough, channel, and solid-bottom) and sizes, cable tray provides the greatest versatility among cable ...



MP Husky Channel Tray is a channel cable tray system consisting of one piece, ventilated or solid bottom section, designed for use with a single power cable or multiple control or single circuit cables.



PW aluminum cable channel provides superior support for small cable quantities over longer spans in industrial facilities See more Other Options Available View Details



Choose from our selection of cable trays, including over 850 products in a wide range of styles and sizes. Same and Next Day Delivery.



Cable channel B-Line series ventilated and non-ventilated channel cable tray for commercial and industrial instrumentation and small power cable management ...



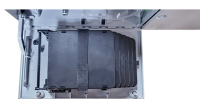
TechLine Mfg. Perforated Channel and Angle utilize bolt-together fittings to route tubing or cable runs in an industrial application. (For our aluminum angle, we also offer a pinned angle splice that saves labor.)



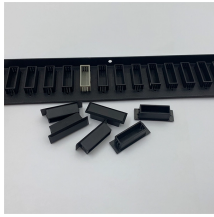
Over the past 55+ years, MP Husky US Cable Tray has engineered and manufactured the most reliable, highest quality, cost effective and innovative cable trays systems available.



Find channel tray products from MonoSystems, the leader in cable management solutions.



They can be easily mounted on ladder-type cable trays or framing channel struts without cumbersome mounting brackets. Our industry-leading interlocking frame, with its captive stainless steel gripping ...



Cable channel B-Line series ventilated and non-ventilated channel cable tray for commercial and industrial instrumentation and small power cable management applications.



Cable channel T& B offers cable channel in solid or ventilated straight sections. Ventilating channel has burr-free oblong punched holes for easy access. Ty-Rap cable tie slots are provided between each ...

## Contact Us

For more information, pricing, or custom energy solutions, please contact us:

Website: <https://www.gdroofing.co.za>

Email: [sales@gdroofing.co.za](mailto:sales@gdroofing.co.za)

Phone: +27 72 418 9365

Address: 22 Electron Avenue, Isando, Johannesburg, 1600, South Africa

This document is for informational purposes only. Specifications subject to change without notice.

