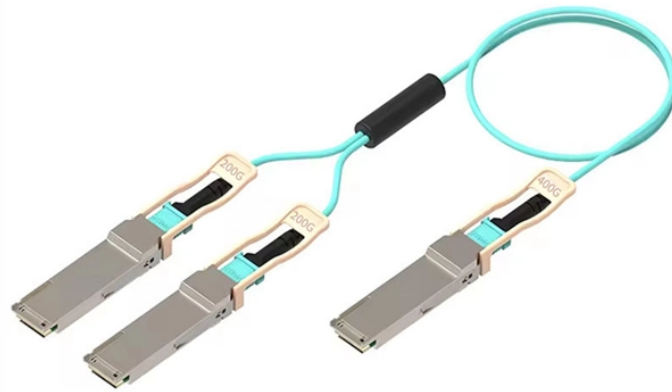


Installation Requirements for Electrical Well Distribution Boxes



Overview

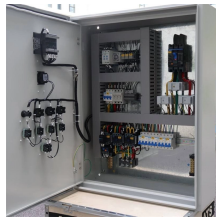
Check for proper IP/NEMA ratings and material quality. Ensure safe placement: install in dry, accessible areas with good ventilation and at appropriate height (typically ~1. Practice good wiring: secure grounding, neat cable management, proper insulation, and correct wire gauge and. However, the key to a safe and reliable system lies in proper installation. If it's done poorly, you risk short circuits, fire hazards, or system failure. Done right, it ensures safety, compliance, and long-lasting performance. This guide breaks down everything homeowners need to know about outdoor electrical junction boxes in plain English. You'll learn what they are, why they're required, the difference. The National Electrical Code (NEC) requirements might seem like bureaucratic red tape, but they're more like the safety rails that keep everything running smoothly and prevent dangerous surprises. "Getting your distribution box installation right isn't just about passing inspection - it's about. The installation requirements and specifications of Distribution box involve many aspects, including site selection, fixing method, wiring specifications and safety protection. The UGS Manual includes general information on concrete, steel, precast reinforced concrete structures and pull

ropes, conduits, fittings and risers, handholes.

Installation Requirements for Electrical Well Distribution Boxes



The installation requirements and specifications of Distribution box involve many aspects, including site selection, fixing method, wiring specifications ...



Design requirements for low voltage distribution boxes cover NEC, IEC, and safety standards to ensure reliable, compliant electrical installations.



When planning electrical installations for larger commercial or industrial establishments, it will be necessary for the Engineer, Architect, or Electrical Contractor to contact the Company for ...



Learn what an outdoor electrical junction box is, NEC 314 requirements, types like pull boxes and splice boxes, proper sizing rules, and when you need weatherproof protection.



The installation requirements and specifications of Distribution box involve many aspects, including site selection, fixing method, wiring specifications and safety protection.



It is used by contractors, engineers, architects, and manufacturers engaged in the installation of underground electrical structures. All of the documents below are in PDF format.



Design requirements for low voltage distribution boxes cover NEC, IEC, and safety standards to ensure reliable, compliant electrical installations.



When planning electrical installations for larger commercial or industrial establishments, it will be necessary for the Engineer, Architect, or Electrical Contractor to contact the Company for detailed ...



Learn how to install a distribution box safely and correctly. Covers wiring, placement, standards, and expert tips for a compliant setup.



WAC 296-46B Electrical Safety Standards, Administration, and Installation State of Washington L& I Electrical Program



This document represents the minimum requirements and specifications for the installation of the electrical underground distribution systems fed from padmounted transformation, serving Secondary ...



The latest NEC updates prioritize adaptive solutions for modern energy demands. With homes now packing solar arrays, EV chargers, and smart-home systems, distribution boxes work harder than ...

Contact Us

For more information, pricing, or custom energy solutions, please contact us:

Website: <https://www.gdroofing.co.za>

Email: sales@gdroofing.co.za

Phone: +27 72 418 9365

Address: 22 Electron Avenue, Isando, Johannesburg, 1600, South Africa

This document is for informational purposes only. Specifications subject to change without notice.

