

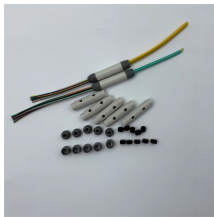
## Installation Solution for Nigeria Integrated Energy Cabinet 47U



## Installation Solution for Nigeria Integrated Energy Cabinet 47U



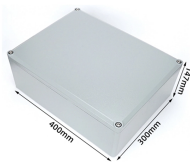
With no moving parts and remote monitoring, it provides a safer, more efficient solution with dedicated service support. The Cabinet offers flexible installation, built-in safety systems, ...



To assist with the installation of Excel products we have a number of documents designed to provide guidelines on the best way to install the products. Also make sure you check out our "How To" videos ...



Our Energy Storage All-in-One Cabinet Factory integrates cutting-edge battery technology, intelligent energy management, and robust safety features to deliver seamless power solutions.



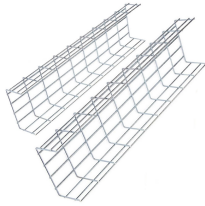
The 47U IDC Cabinet is a high-performance solution designed to meet the rigorous demands of network servers and IT infrastructures. Engineered for versatility, it offers excellent space optimization and ...



SolarEast Group's outdoor site energy storage cabinet solution is designed to be robust and highly weather-resistant, making it ideal for operation in Nigeria's tropical climate.



Need help? Do you have a question about the TS 47U and is the answer not in the manual?



Need help? Do you have a question about the TS 47U and is the answer not in the manual?



We supply a wide range of 47U server cabinets made to order and stocked in the UK. The typical lead time is 5-7 days unless the cabinet is ex stock at time of order. Please also view our server rack ...



This freestanding cabinet is for data storage, server housing, infrastructural cabling and has solutions for hot/cold corridor architecture. Delivered without doors, side panels and tilting bar



The right cabinet or rack can improve your server network gear deployment process, promote efficient air flow and heat management, enable quicker and easier equipment moves and help with security ...



This 47U server cabinet comes fully assembled for quick and easy deployment with pre-installed casters that let you maneuver it over a level, smooth, stable surface and through a standard two-meter ...

## Contact Us

For more information, pricing, or custom energy solutions, please contact us:

Website: <https://www.gdroofing.co.za>

Email: [sales@gdroofing.co.za](mailto:sales@gdroofing.co.za)

Phone: +27 72 418 9365

Address: 22 Electron Avenue, Isando, Johannesburg, 1600, South Africa

This document is for informational purposes only. Specifications subject to change without notice.

