

## Installation and Construction of Cable Trays in Monaco



### Overview

Step-by-step on-site guide: learn how to plan, mark, support, and install cable trays correctly, from shop drawing approval to final checks. Method Statement installation of Cable Trays and Ladders - Planning Engineer FZE. The Cable Tray system is installed in electrical rooms, plant rooms, and service. This method statement describes a detailed procedure for properly installing cable trays and conduits for the Feeder System. Tool Required: On receipt of the cable tray, trunking, cable ladder and accessories at site necessary precautions shall be taken. □ TABLE OF CONTENTS 1. The process described here takes a systematic approach to ensuring that cable tray installations meet safety, reliability, and project-specific needs while following to. Cable tray systems are designed for easy installation and to accommodate power, communications, and signal cabling across a variety of applications.

## Installation and Construction of Cable Trays in Monaco



This method statement covers the site installation of the cable tray & ladders and the requirements of checks to be carried out.



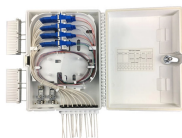
This document provides a method statement for installing cable trays or trunking. It outlines responsibilities for the project manager, construction manager, site engineer, QA/QC inspector, HSE ...



Step-by-step cable tray and conduit installation method with safety, quality and inspection procedures as per IEEE standards.



The purpose of this article is to define the sequence and methodology for the installation of electrical cable trays, cable trunking, cable raceways and boxes, junction and pull boxes.



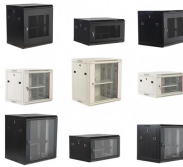
This procedure to clear the method of the supply, installations Cable Tray and Trunking System for the project.



Step-by-step instrumentation cable tray installation guide with safety tips, standards, inspections, and downloadable Excel checklist.



Step-by-step on-site guide: learn how to plan, mark, support, and install cable trays correctly, from shop drawing approval to final checks.



Below is a complete Method Statement For Installation of Cable Tray, Trunking, & Cable Ladders in compliance with project specifications and approved material submittals.



This procedure to clear the method of the supply, installations Cable Tray and Trunking System for the project.



Trays shall be stored on flat surfaces with adequate support, off the ground, in a dry, shaded area. Accessories shall be stored in labeled containers or shelves for easy identification and access. ...



The cable tray shall be installed with a 40mm minimum space between the structure and the tray. All cable shall be securely fixed to the tray, work and the complete installation must be carried out in a ...

## Contact Us

For more information, pricing, or custom energy solutions, please contact us:

Website: <https://www.gdroofing.co.za>

Email: [sales@gdroofing.co.za](mailto:sales@gdroofing.co.za)

Phone: +27 72 418 9365

Address: 22 Electron Avenue, Isando, Johannesburg, 1600, South Africa

This document is for informational purposes only. Specifications subject to change without notice.

