

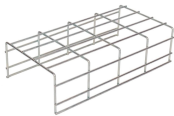
Installation of 10 Gigabit Optical Module Server



Installation of 10 Gigabit Optical Module Server



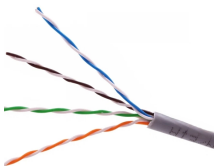
Single-fiber bidirectional (BIDI) optical modules must be used in pairs. For example, SFP-10G-BXU1 must be used with SFP-10G-BXD1.



Whether you need a fast connection to your 10-GbE-equipped server or NAS device, or if you simply want to connect two Gigabit switches in your data center at higher speeds to eliminate bottlenecks, ...



This article will explore best practices for deploying 10G optical modules and offer tips for troubleshooting and maintaining their performance to maximize the longevity and efficiency of your ...



These installation instructions provide overview and specification information for small form-factor pluggable (SFP/ SFP+/SFP28) modules, as well as instructions for installing and removing the modules.



10Gtek products catalogs and instruction manuals download including optical transceiver, DAC, AOC, Media Converter, POE etc.



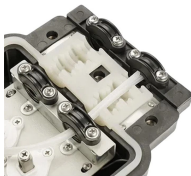
To determine achievable distances, refer to the device's optical specifications and to the specific characteristics of your fiber installation. The following table lists specifications for the 10 Gb ...



A complete professional guide covering all key installation, cleaning, ESD, compatibility, environmental, and safety precautions for 10G SFP+ optical modules.



In this step-by-step guide, we will walk you through the process of installing and removing SFP transceiver modules to ensure proper handling and avoid damage to the module or network ...



Cisco Transceiver Modules - Some links below may open a new browser window to display the document you selected.



As an essential component of network communication, optical modules have been widely used in various scenarios such as data centers, enterprise LANs, and WANs. An optical module is ...

Contact Us

For more information, pricing, or custom energy solutions, please contact us:

Website: <https://www.gdroofing.co.za>

Email: sales@gdroofing.co.za

Phone: +27 72 418 9365

Address: 22 Electron Avenue, Isando, Johannesburg, 1600, South Africa

This document is for informational purposes only. Specifications subject to change without notice.

