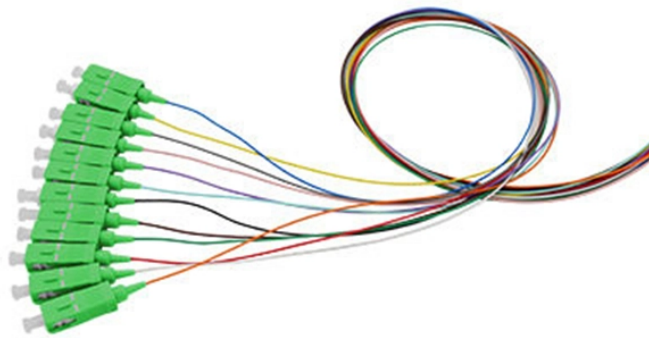


Installation of North Asia Trough-Type Cable Trays



Overview

This installation guide provides comprehensive instructions for the assembly, cutting, and installation of the Trough (P31) cable tray system. In the world of cable management, the trough type cable tray stands as a versatile and robust solution for supporting and protecting electrical and data cables. Its unique design, featuring a solid bottom and side rails, makes it ideal for a wide range of applications, from industrial plants to association representing the major electrical equipment manufacturers in the U. What is a Cable Tray System?

As per the National. Below you will find brief information for P31 Cable Trough. CABLE TRAY INSTALLATION PROCEDURE / METHOD STATEMENT 1.

Installation of North Asia Trough-Type Cable Trays



Economical support for cable drops and branch cable runs from the backbone cable tray system. Standard widths of 75, 100, and 150 millimeters in metal systems and up to 200 millimeters in ...



Learn about the key regulations and installation practices for cable tray systems in countries like the US, China, India, and more.



This installation guide provides comprehensive instructions for the assembly, cutting, and installation of the Trough (P31) cable tray system.



Locate the area where cable tray shall be installed as per the Issued For Construction (IFC) drawings. Prepare the required tools and materials to be used for the installation of the cable tray.



A professional guide to trough type cable trays. Explore load capacity charts, installation guidelines, advantages over ladder type, and key selection criteria for your project.



This guide covers the critical steps, from selecting the right electrical cable tray and performing accurate cable fill calculations to managing a safe cable pull through and ensuring all bonding and grounding ...



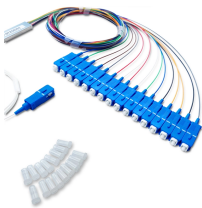
The Cable Tray system is installed in electrical rooms, plant rooms, and service corridors. This section will guide you through the necessary steps to ensure a successful installation.



Ø Tray-type cable tray can be used for fully enclosed cable laying. It is most suitable for laying computer cables, communication cables, thermocouple cables and other control



Learn about the key regulations and installation practices for cable tray systems in countries like the US, China, India, and more.



Cable tray length is selected based on the load to be supported, the distance between the supports (also referred to as the span), and handling and installation constraints.



This document provides details on installing cable trays and their support systems. It includes diagrams showing how to mount cable trays on walls using pre-fabricated flanges or channels.

Contact Us

For more information, pricing, or custom energy solutions, please contact us:

Website: <https://www.gdroofing.co.za>

Email: sales@gdroofing.co.za

Phone: +27 72 418 9365

Address: 22 Electron Avenue, Isando, Johannesburg, 1600, South Africa

This document is for informational purposes only. Specifications subject to change without notice.

