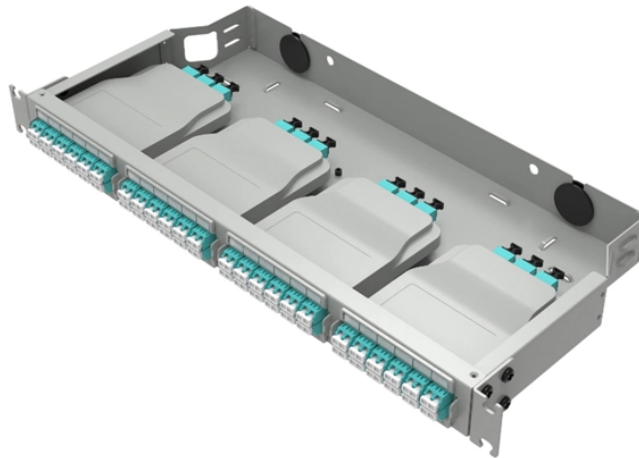


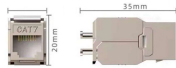
Installation of OSFP optical modules and QSFP-DD in Estonia



Overview

This video provides a complete guide on how to achieve seamless, high-speed connectivity between OSFP and QSFP-DD ports. In this video, we break down the three foundational principles for successful communication and demonstrate practical solutions using optical . Juniper Networks transceivers are hot-removable and hot-insertable field-replaceable units (FRUs). You can remove and replace them without powering off your device or disrupting device functions. This section provides the installation, cabling, and removal instructions for the Quad Small Form-Factor Pluggable (QSFP) transceiver modules. Refer to the Cisco Transceiver Modules. An optical OSFP transceiver module with MPO-16/APC connector is shown in Figure 1. If you design or operate high-density 400G Ethernet, you will get practical selection criteria, failure-mode. Our active optical cable assembly portfolio provides improved cable flexibility and longer reach as compared to both traditional passive copper and emerging active copper (ACC/AEC) solutions, supporting high performance computing, data center and networking interconnect applications.

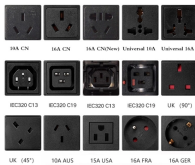
Installation of OSFP optical modules and QSFP-DD in Estonia



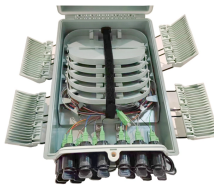
Discover essential installation, maintenance, and handling guidelines for the 800G OSFP & QSFP-DD Transceiver Module. Learn about proper procedures, precautions, and the importance ...



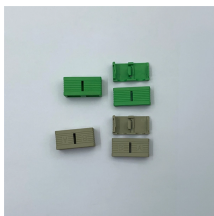
Installing and removing a pull latch transceiver module This installation procedure is applicable to QSFP-DD, QSFP28, CXP, and QSFP+ transceiver modules. The pull latch of transceiver modules can be ...



A: No. OSFP and QSFP-DD have different cages. They can interoperate optically if both sides run DR4, but the modules themselves are not physically interchangeable.



Use the information in this topic to install OSFP or QSFP-DD optical transceivers and fiber-optic cables. Juniper Networks transceivers are hot-removable and hot-insertable field-replaceable units (FRUs).



Overview Learn how to install and remove OSFP and QSFP transceiver modules safely using proper ESD and handling procedures. This section provides the installation, cabling, and ...



Learn how a real 400G rollout compared OSFP and QSFP-DD, including measured latency, power, optics options, and a field engineer checklist.



Speed Upgrade: 800G as Mainstream Currently, 800G optical modules (in QSFP-DD/OSFP form factors) have become the “standard” in intelligent computing centers.



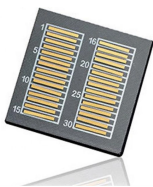
This video provides a complete guide on how to achieve seamless, high-speed connectivity between OSFP and QSFP-DD ports.



This guide describes general handling measures and precautions when handling OSFP/QSFP-DD transceiver module to ensure that the risk of damage is reduced during processing



SFP, QSFP, QSFP-DD, OSFP ACTIVE OPTICAL CABLE ASSEMBLIES Our active optical cable assembly portfolio provides improved cable flexibility and longer reach as compared to both ...



A: No. OSFP and QSFP-DD have different cages. They can interoperate optically if both sides run DR4, but the modules themselves are not ...

Contact Us

For more information, pricing, or custom energy solutions, please contact us:

Website: <https://www.gdroofing.co.za>

Email: sales@gdroofing.co.za

Phone: +27 72 418 9365

Address: 22 Electron Avenue, Isando, Johannesburg, 1600, South Africa

This document is for informational purposes only. Specifications subject to change without notice.

