

Installation of grounding wire in household electrical distribution box



Overview

Install grounding wire to provide a current with alternate paths to avoid electrical shocks in case of power surges. Connect electrical service boxes to grounding rods. Many homeowners recognize grounding only as the third, round prong on a standard electrical outlet, but its function extends far beyond. Today, we're diving deep into the world of distribution box grounding, breaking down the standards, and shining a light on those sneaky mistakes that even experienced electricians sometimes make. So, if you're keen on ensuring your home's safety and navigating the maze of wires without getting zapped, you're in the right place. Dive in and let's get started!.

Installation of grounding wire in household electrical distribution bo



Generally, copper core wire is selected as the ground wire and connected to the PE wiring bar. When connecting, it is necessary to strip the wire for a distance, then connect it to the ...



☐☐ Schedule your electrical panel grounding service today with our licensed experts. We'll inspect, upgrade, or install a code-compliant grounding ...



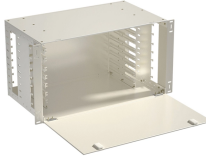
Whether you're a seasoned pro or just starting out, this comprehensive guide will give you practical insights into proper grounding techniques, with a special focus on how selecting quality materials ...



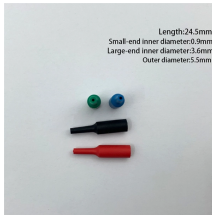
Installed correctly, grounding wire can prevent electrical shocks or fires at homes or in offices. This guide reviews the basics of electrical grounding, how to safely ground wiring and how to ...



However, for experienced DIYers, this guide provides a detailed, step-by-step approach to ensuring your circuit breaker box is properly grounded, enhancing electrical safety grounding ...



Savvy homeowners might choose to add surge protection to their ...



Definition of electrical grounding: Grounding, in the electrical world, refers to the process of connecting an electrical circuit to the earth, ensuring safety from any unwanted voltage.



Step-by-step guide to installing a safe and compliant electrical grounding system for home safety, stability, and surge protection.



☐☐ Schedule your electrical panel grounding service today with our licensed experts. We'll inspect, upgrade, or install a code-compliant grounding system that protects your home and powers ...



Savvy homeowners might choose to add surge protection to their existing electrical system. Here's a guide to help you ground wires in your home.



How to make proper & safe electrical ground wiring connections in the box: This article describes options for connecting a metal electrical box to the grounding conductor & connecting the ...



Generally, copper core wire is selected as the ground wire and connected to the PE wiring bar. When connecting, it is necessary to strip the wire ...



Connect one end of the insulated copper wire to the grounding grid and lead the other end into the distribution box and connect it to the ground bus bar of the distribution box.

Contact Us

For more information, pricing, or custom energy solutions, please contact us:

Website: <https://www.gdroofing.co.za>

Email: sales@gdroofing.co.za

Phone: +27 72 418 9365

Address: 22 Electron Avenue, Isando, Johannesburg, 1600, South Africa

This document is for informational purposes only. Specifications subject to change without notice.

