

## Installation of the ground distribution box at the exhibition booth



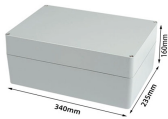
### Overview

Ensure your exhibit has the power it needs – and that it's accessible in the right places – by following this step-by-step guide. By Betsy EarleProduction Elektriks provides full-service temporary power distribution services. Safety, professionalism, and experience are critical to the success of your show. Do not settle for less than Production. Electrical installations for exhibitions, trade shows, and event stands are critical because they ensure a reliable and safe power supply for lighting, displays, audio-visual equipment, and other essential functions. WIV DISTRIBUTION BOXES MAXIMUM FLEXIBILITY + MOBILITY. Maximum flexibility + mobility: With our pluggable WIV exhibition distribution boxes you are well placed to benefit. Posted on Oct 10, 2024 in Technology 1. The following definitions apply: Exhibition: An event for product exhibition or sale, held. Today, we're diving deep into the world of distribution box grounding, breaking down the standards, and shining a light on those sneaky mistakes that even experienced electricians sometimes make. Whether you're a seasoned pro or just starting out, this comprehensive guide will give you practical.

## Installation of the ground distribution box at the exhibition booth



From technical design phase to installation and dismantle, we are there from start to finish. Safety, professionalism, and experience are critical to the success of your show.



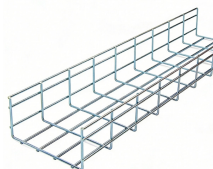
As per their name, these systems are perfect for exhibition and show setups that require a timely power supply. These installations are not part of the permanent building infrastructure and ...



To make it even faster to set up, we have designed the Distro-Box to be stored inside the floor box. This saves not only storage of these boxes, but saves all the time to gather the boxes and distribute them ...



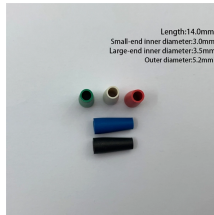
Ensure your exhibit has the power it needs - and that it's accessible in the right places - by following this step-by-step guide.



Complete specification guide for outdoor electrical distribution boxes covering NEC Article 312 requirements, NEMA ratings, sizing calculations, and selection criteria for commercial and ...



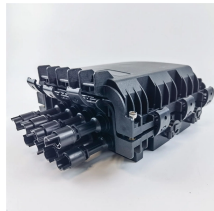
Regardless of the distribution scheme, public installations must use a residual current device (RCD) not exceeding 30 mA. Direct contact protection must be ensured through insulation ...



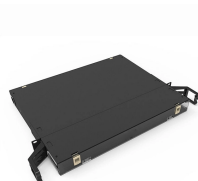
Whether you're a seasoned pro or just starting out, this comprehensive guide will give you practical insights into proper grounding techniques, with a special focus on how selecting quality materials ...



As per their name, these systems are perfect for exhibition and show setups that require a timely power supply. These installations are not part of the ...



Maximum flexibility + mobility: With our pluggable WIV exhibition distribution boxes you are well placed to benefit from a faultless operation in changing locations.



To help you avoid those headaches, we've put together a practical guide to ensure your exhibit booth electrical setup runs smoothly, efficiently, and without surprises.



Learn how to install a distribution box safely and correctly. Covers wiring, placement, standards, and expert tips for a compliant setup.

## Contact Us

For more information, pricing, or custom energy solutions, please contact us:

Website: <https://www.gdroofing.co.za>

Email: [sales@gdroofing.co.za](mailto:sales@gdroofing.co.za)

Phone: +27 72 418 9365

Address: 22 Electron Avenue, Isando, Johannesburg, 1600, South Africa

This document is for informational purposes only. Specifications subject to change without notice.

