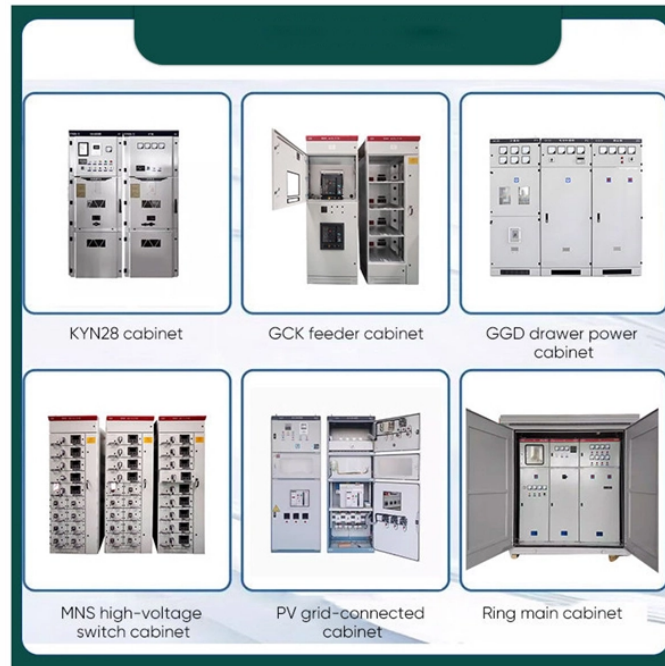


## Installation of wiring conduits for indoor electrical distribution boxes

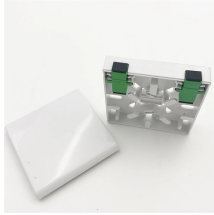


### Overview

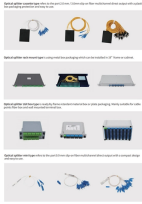
Connect conduits terminating in switchgear, fuse boards, trunking, adaptable boxes or other non-spouted enclosure with smooth bore male PVC bushing and sockets. Ensure that conduit connections are tight and fixed rigid. This document describes the minimum requirements for the design and installation of electric conduits and pulling insulated cables. A minimum of 24 inches of cover for secondary (0 – 750 V) electric. In this article today we will talk about the Installation of Electrical Conduit and Boxes | Installation of PVC Conduits | Heavy Gauge PVC Conduits | Installation of Flexible EPVC Conduits | Installation of Steel Conduits | Installation of Embedded Conduits in Slab and Walls | Installation of. NEC Article 314 establishes requirements for the installation and use of electrical boxes, conduit bodies, fittings, and handhole enclosures. A conduit body is a removable-cover section of a conduit system that provides access at junctions or termination points. Expansion ring, PVC boxes, adapters, male bushes, locking nuts shall be utilized as per approved shop. If you're dragging extension cords across your basement or garage to power shop lights and tools, consider extending an existing circuit instead by installing surface-mounted wiring and conduit. No need to rip up the whole

wall or fish wires through the studs. Choose a power source like a wall.

## Installation of wiring conduits for indoor electrical distribution boxes



Learn the essential procedures for safely and reliably joining electrical protective tubing to the breaker box for system compliance.



NEC Article 314 establishes requirements for the installation and use of electrical boxes, conduit bodies, fittings, and handhole enclosures.



The images you provided show the beginning stages of an interior construction or renovation project, specifically involving the installation of surface-mounted electrical wiring using PVC...



Before starting, check with your local electrical inspector to make sure you understand specific local code requirements, and get a permit and inspection, if required. Below, I'll walk you ...



Electrical conduits are predominantly made of insulating and sturdy material for optimum functionality. Although it is best suited for a professional electrician to accomplish most electrical ...



The document outlines the method statement for the installation of electrical conduits and boxes, detailing project specifications, quality assurance, and health and safety standards.



This document describes the minimum requirements for the design and installation of electric conduits and pulling insulated cables. This document also provides requirements of what facilities are allowed ...



In this article, you will find a comprehensive guide to electrical conduit installation, covering essential steps and tips for safe, organized, and code ...



This document is intended to enhance electrical safety by aiding the installer in meeting the “neat and workmanlike” requirements, reducing future repair needs, providing for future expansion to avoid ...



The purpose of generating this method statement is to define the procedure for Installation of Electrical Conduit and boxes through guidelines contained herein to ensure that the job execution ...



Below is a precise electrical method statement that covers all processes related to the installation of PVC, GI, RGS, EMT and steel conduits and boxes as per project specification, ...



Service conduits, by which water may enter buildings, shall be suitably plugged or sealed at the source of supply such as utilities' transformer or secondary handhole, and at the supply end of the conduit ...

## Contact Us

For more information, pricing, or custom energy solutions, please contact us:

Website: <https://www.gdroofing.co.za>

Email: [sales@gdroofing.co.za](mailto:sales@gdroofing.co.za)

Phone: +27 72 418 9365

Address: 22 Electron Avenue, Isando, Johannesburg, 1600, South Africa

This document is for informational purposes only. Specifications subject to change without notice.

