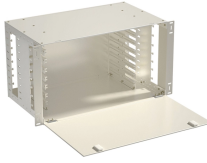


## Integrated Power Supply Design for Substations



## Integrated Power Supply Design for Substations



IEEE Power Substations Standards Collection included active standards covering switching stations, transformer stations, and generating station switchyards. IEEE Substations Standards Collection is a ...



For a thorough substation design, you'll need the following documents: a single-line diagram, a physical layout of the substation, section cuts taken from the physical plant, and wiring ...



guide for their study. The chapters are written for the electric power engineering professional for detailed design information as well as for other engineering professions (e.g., mechanical and civil) ...



IEM Power Systems is a premier supplier of electrical equipment and substation packages. We offer high quality individual components or a whole package incorporating all key equipment required for a ...



What is substation design? Substation design involves planning, engineering, and constructing electrical substations for efficient power transmission and distribution. The goal is seamless delivery of ...



For years, Eaton has provided standardized bus/cable coordination for unit substations, making it easier for installing contractors to put the substation components together in the field.



Abstract As a necessary power source for substations and other important power-using places, substation power supply system provides working power for important loads such as control devices, ...



By examining the legal and regulatory frameworks that apply to the design high voltage substations, this chapter seeks to provide an understanding of the requirements and obligations that must be met in ...



Integrated power distribution system in a free-standing enclosure, with or without aisles.



The substation AC/DC integrated power supply includes the AC power supply, DC operational power supply, AC uninterruptible power supply, inverter power supply and communication power supply.

## Contact Us

For more information, pricing, or custom energy solutions, please contact us:

Website: <https://www.gdroofing.co.za>

Email: [sales@gdroofing.co.za](mailto:sales@gdroofing.co.za)

Phone: +27 72 418 9365

Address: 22 Electron Avenue, Isando, Johannesburg, 1600, South Africa

This document is for informational purposes only. Specifications subject to change without notice.

