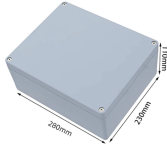


## Intelligent Patch Panel and Management Unit



## Intelligent Patch Panel and Management Unit



Aravolta's intelligent patch panel management gives you complete visibility and control over your physical network infrastructure, reducing errors, accelerating troubleshooting, and enabling ...



LS SimpleWin™ Intelligent Infrastructure Management System drastically speeds up and simplifies site planning and daily network provisioning, maintenance and security.



Connection management device via RJ45 patch cables. This patch panel is part of Datwyler's E-cabling Solution. Please see our Intelligent Management Unit (IMU) and intelligent patch cords (with LED).



Panduit's PViQ™ System Hardware, which includes intelligent patch panels, modules, and cabling, seamlessly feeds information directly into the Physical Infrastructure Manager™ (PIM™) Software ...



CommScope offers Intelligent Copper Panels for automated infrastructure management solutions that enable you to monitor, manage and optimize your network connectivity in real time



The system is configured with simple DICS structures containing self-scanned E-panels, E-cords with 10 pin, and Intelligent Management Unit [IMU]. It adopts a distributed scanning methodology to ...



FUTURE-PATCH is therefore an intelligent, electronics based solution that allows technicians to be visually guided (LED) on site at the rack when adding or removing patch cords and to directly check ...



Belden PatchPro® offers a complete intelligent ready physical layer management system that uses RFID (radio frequency identification) technology for wireless identification of individual patch cords ...



UNICOM's Intelligent Patch Panel is an ideal solution to manage the network infrastructure. The panel features onboard intelligence to guide technicians and can be used to display connectivity diagnostic ...



Intelligent Patching Infinique's Intelligent Patch Panel Solution for Copper and Fiber Structured Cabling System.

## System Features System Design Scanning Technology of Smart Patch Panel System Topology System Benefits

The system is configured with simple DICS structures containing self-scanned E-panels, E-cords with 10 pin, and Intelligent Management Unit (IMU). It adopts a distributed scanning methodology to manage link information for the copper panel or fiber panel. Each panel uses its self-scanning methodology and has high speed performance. Management software... See more on [addison-tech](#)

```
.b_imgcap_altitle p strong,.b_imgcap_altitle .b_factrow
strong{color:#767676}#b_results .b_imgcap_altitle{line-height:22px}.b_imgcap_altit
le{display:flex;flex-direction:row-reverse;gap:var(--mai-smtc-padding-card-nested-
default)}.b_imgcap_altitle .b_imgcap_img{flex-shrink:0;display:flex;flex-
direction:column}.b_imgcap_altitle .b_imgcap_main{min-
width:0;flex:1}.b_imgcap_altitle .b_imgcap_img>div,.b_imgcap_altitle .b_imgcap_img
a{display:flex}.b_imgcap_altitle .b_imgcap_img img{border-radius:var(--mai-smtc-
corner-card-default)}.b_hList img{display:block}.b_imagePair ner
img{display:block;border-radius:6px}.b_algo .vttv2 img{border-radius:0}.b_hList
.cico{margin-bottom:10px}.b_title .b_imagePair> ner,.b_vList>li>.b_imagePair>
ner,.b_hList .b_imagePair> ner,.b_vPanel>div>.b_imagePair> ner,.b_gridList
.b_imagePair> ner,.b_caption .b_imagePair> ner,.b_imagePair>
ner>.b_footnote,.b_poleContent .b_imagePair> ner{padding-bottom:0}.b_imagePair>
ner{padding-bottom:10px;float:left}.b_imagePair.reverse>
ner{float:right}.b_imagePair .b_imagePair:last-child:after{clear:none}.b_algo .b_title .
b_imagePair{display:block}.b_imagePair.b_cTxtWithImg>*{vertical-
align:middle;display:inline-block}.b_imagePair.b_cTxtWithImg>
ner{float:none;padding-right:10px}.b_imagePair.square_s>
ner{width:50px}.b_imagePair.square_s{padding-left:60px}.b_imagePair.square_s>
ner{margin:2px 0 0 -60px}.b_imagePair.square_s.reverse{padding-left:0;padding-
right:60px}.b_imagePair.square_s.reverse> ner{margin:2px -60px 0
0}.b_ci_image_overlay:hover{cursor:pointer}
sightsOverlay,#OverlayIFrame.b_mcOverlay sightsOverlay{position:fixed;top:5%;left:
5%;bottom:5%;right:5%;width:90%;height:90%;border:0;border-radius:15px;margin:0
;padding:0;overflow:hidden;z-index:9;display:none}#OverlayMask,#OverlayMask.b_
mcOverlay{z-index:8;background-color:#000;opacity:.6;position:fixed;top:0;left:0;wid
th:100%;height:100%}p>.news_dt{color:#767676}tkm-networks
```

## Contact Us

For more information, pricing, or custom energy solutions, please contact us:

Website: <https://www.gdroofing.co.za>

Email: [sales@gdroofing.co.za](mailto:sales@gdroofing.co.za)

Phone: +27 72 418 9365

Address: 22 Electron Avenue, Isando, Johannesburg, 1600, South Africa

This document is for informational purposes only. Specifications subject to change without notice.

