

Internal Structure of GPON Optical Module



Internal Structure of GPON Optical Module



GPON uses optical fibers and passive optical splitters to enable a single optical network interface to connect multiple endpoints. This network structure significantly reduces the cost of network ...



OMCI (GPON): A critical control channel used by the OLT to configure and manage the ONT's internal structure (Management Information Base - MIB). This includes setting up VoIP ...



The network path between the terminals is known as Optical Device Network (ODN), which comprises passive optical components, such as optical fibers and passive optical splitters.



The document outlines the fundamentals of GPON (Gigabit-capable Passive Optical Networks), including its architecture, basic concepts, frame structure, key technologies, and service provisioning.



GPON systems are characterized, in general, by an optical line termination (OLT) system and an optical network unit (ONU) or optical network termination (ONT) with a passive optical distribution network ...



It discusses key components such as Optical Line Terminals (OLTs) and Optical Network Units (ONUs), the services supported by GPON, and its advantages like high bandwidth and long reach.



Active equipments are positioned only upstream and downstream of the network and through optical modules exploiting WDM (Wavelength Division Multiplexing) technology, allow two-way ...



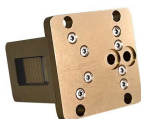
OLTs typically operate using redundant DC power (-48VDC) and have at least 1 Line card for incoming internet, 1 System Card for on-board configuration, and 1 to many GPON cards. Each GPON card ...



It discusses the system structure, main boards, key features, networking and applications. The main boards include the control and switching card, GPON line cards, Ethernet uplink cards, and power ...



PON modules are the core of the PON boards, different modules have different optical power and receiver sensitivity, GPON module B+ C+ and C++ for ...



GPON replaces the traditional three-tier Ethernet design with a two-tier optic network which eliminates access and distribution Ethernet switches with passive optical devices. Cisco introduces GPON with ...



The user end-point of GPON is the ONT, i.e., the Optical Network Terminal. It is a specialised modem for converting optical signals into electrical signals at the premises of the end-user.

Contact Us

For more information, pricing, or custom energy solutions, please contact us:

Website: <https://www.gdroofing.co.za>

Email: sales@gdroofing.co.za

Phone: +27 72 418 9365

Address: 22 Electron Avenue, Isando, Johannesburg, 1600, South Africa

This document is for informational purposes only. Specifications subject to change without notice.

