

GDR Telecom Site Energy Systems

Italian Figure-8 Optical Cable 4 Cores

Mesh door/glass door optional



Sp-601 glass door



Sp-602 mesh door



Italian Figure-8 Optical Cable 4 Cores



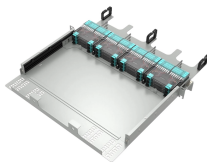
It incorporates both a steel messenger and the core of a standard optical Fibre ...



Self-supported mini figure 8 fiber optic cable with 4 cores, steel messenger wire, and PE/LSZH jacket. Ideal for indoor/outdoor overhead installations with crush resistance.



Get specifications on the Singlemode Figure 8 Fiber Cable GYXTC8Y, Figure 8 Self-supporting Outdoor Singlemode fiber Cable, 4-12 Cores. Cheap price, industry leading quality that you can buy with ...



Applied indoor, for cable tray distribution networks of fiber optics. It is allowed to lay cable on the outdoor. Fill this form for quick answer within 24 hours.



After a PSP moisture barrier is applied around the cable core, this part of cable accompanied with the stranded wires as the supporting part are completed with a PE sheath to be a figure-8 structure. This ...



Loose tube stranding means that fibers have good secondary excess length; also allows fibers free movement in the tube, keeping fiber stress free when the cable is subjected to longitudinal stress



It incorporates both a steel messenger and the core of a standard optical Fibre cable into a single jacket of "Figure-8" cross-section. The combination of strand and optical Fibre into a single cable allows ...



The 4-core Figure 8 fiber optic cable is a critical component in modern commercial infrastructure, prized for its robust design, ease of installation, and superior performance in diverse environments.



The loose tube design provides stable performance over a wide temperature range and is compatible with any telecommunications-grade optical fiber. The gel-free design is fully waterblocked using craft ...



Optical fibres are housed in loose tubes that are made of high-modulus plastic and filled with water blocking yarns. The tubes (and fillers) are stranded around the central strength member to form a ...



The central strength member is made up of stranded wires as the supporting part are completed with a polyethylene (PE) sheath to be figure 8 structure. Corrugated steel tape armored and PE outer ...

Contact Us

For more information, pricing, or custom energy solutions, please contact us:

Website: <https://www.gdroofing.co.za>

Email: sales@gdroofing.co.za

Phone: +27 72 418 9365

Address: 22 Electron Avenue, Isando, Johannesburg, 1600, South Africa

This document is for informational purposes only. Specifications subject to change without notice.

