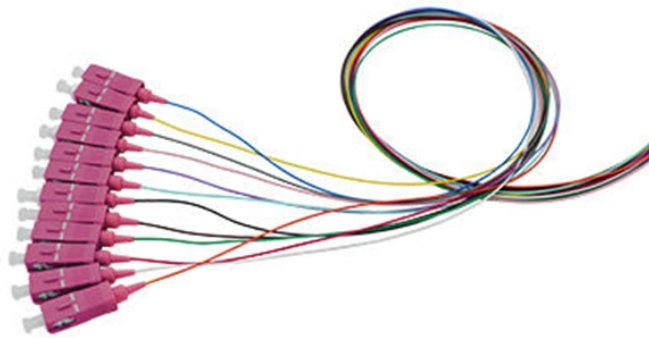


# **Ivory Coast 24-core Optical Splitter Box**



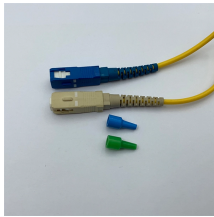
## Ivory Coast 24-core Optical Splitter Box



24 Port Fiber Distribution Box with dual layer design separate the splicing working area. It greatly reduce the time for wiring management for field installer. The cable entries (inlets) are loaded with PG16 ...



SP-1606-24E Terminal Box is made of high-quality ABS Plastic material. It's mainly used for indoor wall-mounted installation.Box cover with locks prevent illegal ...



This distribution box terminates up to 2 fiber optic cables, offers spaces for splitters and up to 48 fusions, allocates 24 SC adapters and working under both indoor and outdoor environments.



Explore our 24 core fiber optic termination box, suitable for FTTX applications. Starting from \$1, with a minimum order of 1 unit. Shop low-price DIN rail boxes and fat fiber optical terminal boxes for ...



FTTH 24-core optical fiber distribution box 16-core PLC splitter box IP68, made of high-quality ABS material, supports 16-24 core, micro and plug-in splitters.



FTTX 8-24 port fiber optic cable distribution box with PLC Splitters IP65 provides a connection point between distribution cables and drop cables at the subscriber access point in the fiber optic network.



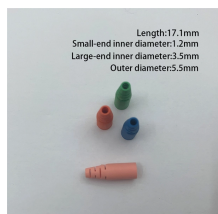
SP-1606-24E Terminal Box is made of high-quality ABS Plastic material. It's mainly used for indoor wall-mounted installation.Box cover with locks prevent illegal open the box itable for fiber optic ...



Outdoor FDB FTTH Fiber Distribution Box is not only it supports 144 core, but also an adapter panel to allow customers to assemble 24 SCAPC adapters. Moreover, it has 3 locks to secure the box: one ...



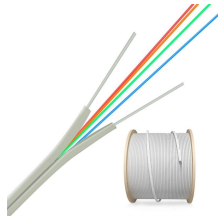
Multi-purpose wiring devices, can be on distribution application and optical split application as well. Flexible and easy to operate. The unique anti-theft lock design made the box opening and closing a ...



FTTH 24 core fiber terminal box is suitable for the distribution and terminal connection for various kinds of optical fiber system, especially suitable for mini-network terminal distribution, in which the optical ...



FTTH 24-core optical fiber distribution box 16-core PLC splitter box IP68, made of high-quality ABS material, supports 16-24 core, micro and plug-in splitters.



The 24 port outdoor fiber optic distribution box wall/pole mounted is used for splicing and terminating indoor SC/LC/FC fiber optic cables with pigtails. You can also use this fiber optic distribution box to ...

## Contact Us

For more information, pricing, or custom energy solutions, please contact us:

Website: <https://www.gdroofing.co.za>

Email: [sales@gdroofing.co.za](mailto:sales@gdroofing.co.za)

Phone: +27 72 418 9365

Address: 22 Electron Avenue, Isando, Johannesburg, 1600, South Africa

This document is for informational purposes only. Specifications subject to change without notice.

