

## JP low-voltage main distribution box model



## JP low-voltage main distribution box model



The product has two types: integrated (applicable to public transformer) and split (applicable to special transformer). It is used in rural power lines and various stations to standardize and miniaturize low ...



Small in size, beautiful in appearance, economical and practical, ...



It is an ideal low-voltage complete set of equipment in current power grid transformation. The TKDJP series outdoor integrated distribution box is suitable for power distribution, metering, protection, and ...



JP integrated distribution box, is a concentration of measuring, qualification, reactive power compensation and other multi-functional comprehensive reach outdoor distribution equipment at an ...



The JP series low-voltage integrated distribution box is an outdoor comprehensive distribution device that integrates metering, outlet, reactive power compensation and other functions.



Jinneng electric JP low-voltage integrated smart distribution box (JP cabinet) is suitable for the majority of rural distribution transformers, rated frequency AC 50Hz, rated voltage 400V, rated current 630A ...



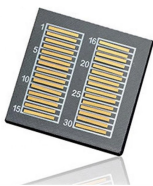
JP series outdoor integrated distribution box concentrates the functions of measuring, outlet wiring, reactive compensation etc. to an integrated box to protect short circuit, overload, over voltage, ...



The JP Cabinet is an AC low-voltage metering distribution box widely used in rural power grids, residential communities, and other low-voltage distribution systems. It integrates functions for power ...



Small in size, beautiful in appearance, economical and practical, installed on the pole of outdoor pole mounted transformers, it is a new generation ideal distribution product for urban and ...



The box is compact in size, nice in appearance, economical, and practical. It is designed to be installed on the utility pole of a household pole-mounted transformer and is an ideal distribution product for ...

## Contact Us

For more information, pricing, or custom energy solutions, please contact us:

Website: <https://www.gdroofing.co.za>

Email: [sales@gdroofing.co.za](mailto:sales@gdroofing.co.za)

Phone: +27 72 418 9365

Address: 22 Electron Avenue, Isando, Johannesburg, 1600, South Africa

This document is for informational purposes only. Specifications subject to change without notice.

