

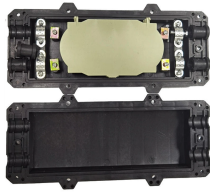
JXF Distribution Box Semi-Embedded



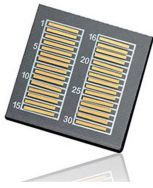
JXF Distribution Box Semi-Embedded



Open-mounted distribution box installation method: Assemble four bolts into the four holes on the corners and tighten them into the expansion pipes to fix the box.



JXF small distribution box is a widely used device in low-voltage power systems, designed for the distribution and control of electrical energy. Suitable for various buildings, industrial, and commercial ...



JXF series low voltage distribution box is compact terminal distribution equipment specially designed for building distribution systems with main busbar rated current covering 10A to 400A, suitable for AC ...



The main structure consists of a box body, a box top, a box door, and an inner door. All parts are waterproof and corrosion-resistant. The bottom of the box is equipped with cable entry and exit ...



JXF series products are suitable for power, lighting and loop power distribution ...



We will present the performance, safe operation methods, and technical parameters of JXF low-voltage distribution box



This document provides specifications for JXF series metal sheet distribution boxes manufactured by Zhejiang Farady Electric Co., Ltd. The boxes are made of cold-rolled steel or stainless steel, have an ...



Metering control box for users such as residential buildings. This product complies with the requirements of GB7251.12-2013 "Low-voltage complete switchgear and control equipment", IEC60439-2:2011 ...



To order such indoor box, a letter "R" is specified when ordering; to order the concealed box sized 250 x 200 x 140, the order number is JXF252014R.



JXF series products are suitable for power, lighting and loop power distribution control, monitoring and metering protection in 50Hz~60Hz, single-phase two-wire, three-phase three-wire, three-phase four ...



Power your operations with the JXF Power Distribution Box from CABA Electric. Rated 220V-380V and up to 400A, it offers IP65 protection, long life, and flexible configurations for dependable performance.

Contact Us

For more information, pricing, or custom energy solutions, please contact us:

Website: <https://www.gdroofing.co.za>

Email: sales@gdroofing.co.za

Phone: +27 72 418 9365

Address: 22 Electron Avenue, Isando, Johannesburg, 1600, South Africa

This document is for informational purposes only. Specifications subject to change without notice.

