

Junction box is too high



Overview

Placing the junction box at an appropriate height ensures easy access for future maintenance, inspections, and troubleshooting. Seems like it could well be feasible to remove the current boxes, and mount old work boxes in their place, but how you do that would depend on the current situation. No, unless I tear down the drywall or tear off the roof. If I could only remember to THINK about. We had an existing box, which sat flush to the drywall, but it had broke on one side of the threading, causing the chandelier to pull down a little (probably not helped by our younger son going on the table and grabbing it). We decided to replace it with a beeper metal hanger, but it looks like the. Overstuffed electrical boxes are a fire hazard, but they're easy to fix. Safety hazards can arise because of loose connections, overheating, corrosion, and poor installations, among others. Here's my math: 2 Romex x 2 conductors = 4 All the ground wires = 1 Two cable clamps = 1 One. Yes box fill is too high. Just roughly if box is 2 inches deep we talk about 72 inch³ of volume. Even without allowance there should not be more than 32 conductors in the box. Recommend evaluation by electrician.

Junction box is too high



I didn't want to take the cover off, but my client requested so I did. This box was about 6"X6" square, and had approx 20 wire nuts. This house was wired in sections at different times. Any ...



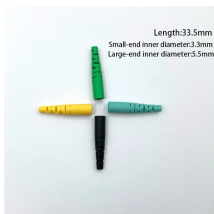
Below, I'll show you how to do it, too. This project is based on working with drywall — if you're working with tile the process of replacing an outlet is going to be much more involved.



Sounds like you need a multi tool to remove some of the stud that the boxes are attached to. Another option, may be that the conductors inside the box can be made shorter so a shallower ...



Placing the junction box at an appropriate height ensures easy access for future maintenance, inspections, and troubleshooting. If a junction box is installed too high, it may become challenging to ...



As long as it is mechanically secure and the cover looks good enough, there's no reason to try to level the box. This is a perfectly fine installation -- you could probably swing from that. Only ...



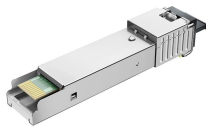
I'd like to replace the boxes with more appropriately sized metal ones while I have the walls open but I'm having trouble finding them in the correct style. They're for outlets so those bigger ...



However, with time, junction boxes can develop issues. Safety hazards can arise because of loose connections, overheating, corrosion, and poor installations, among others. This ...



It's on a sloped ceiling. The lights metal bracket sits flush against the box, so no pressure on the drywall. And this box, it legit feels like it's screwed right to a joist. So the question is, should we even worry or ...



I finally hung my finished ceiling and to my chagrin I discovered that my ceiling fan boxes were mounted too deeply. Of course, I noticed this after I hung the drywall and plastered it.



When the hole for a junction box is too large, use a metal cover plate designed to cover excess space. These plates have screw holes aligning with the box's mounting points.

Contact Us

For more information, pricing, or custom energy solutions, please contact us:

Website: <https://www.gdroofing.co.za>

Email: sales@gdroofing.co.za

Phone: +27 72 418 9365

Address: 22 Electron Avenue, Isando, Johannesburg, 1600, South Africa

This document is for informational purposes only. Specifications subject to change without notice.

