

## LED driver board drives laser diode



## LED driver board drives laser diode



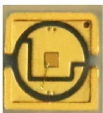
FREE SHIPPING! 4/8 S. 405nm 445nm 450nm Laser Diode LD Driver Board 12V 2W Step-Down Constant Curre...



Lumina Power offers a complete series of CW & pulsed laser diode, high power laser diode driver, laser diode controller, and module which is ideal for OEM applications.



CW laser diode drivers are used to precisely control a laser diode's optical output while protecting the laser diode from over current conditions. Multiple levels of laser diode protection are included in the ...



Shop DigiKey's large in-stock selection of Laser Drivers. View inventory, pricing and order now for same day shipping!



For a complete explanation of laser diode driver package, size, and mounting option comparisons, download the Selector Guide. For low noise operation (constant current mode only), our QCL drivers ...



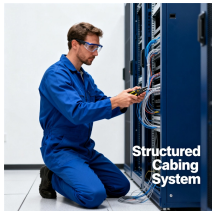
If the diode can only withstand low current, you must first adjust the potentiometer to the minimum current and then adjust the diode to the required output power.



This turn-key rack mount system provides output current to drive laser diodes for pumping solid-state lasers. It offers front panel and remote controls as well as operation via a RS-232 interface.



We specialize in high speed medium and high power drivers working in laser diode current stabilization mode. High reliability, low noise, compactness and simplicity makes our LD drivers stand out from ...



For a complete explanation of laser diode driver package, size, and mounting option ...



Check each product page for other buying options. Price and other details may vary based on product size and color. Need help?



This laser driver evaluation board comes with an unbreakable dummy laser diode formed by a series of regular diodes. It has a complete application circuit, an LED to indicate the working status of the ...

## Contact Us

For more information, pricing, or custom energy solutions, please contact us:

Website: <https://www.gdroofing.co.za>

Email: [sales@gdroofing.co.za](mailto:sales@gdroofing.co.za)

Phone: +27 72 418 9365

Address: 22 Electron Avenue, Isando, Johannesburg, 1600, South Africa

This document is for informational purposes only. Specifications subject to change without notice.

