

Latest Standards for Cable Tray Construction



Overview

NEMA BI 50051 standard for Cat Van Loi wire mesh cable tray is the standard for Metal Cable Tray Systems. The latest edition (2024) defines strict requirements for: Construction, materials, and load capacity. Founded in 1926 and headquartered in Virginia, NEMA develops hundreds of technical standards that improve safety, efficiency, and. These systems provide an efficient and adaptable solution for managing a wide range of cables, including power cables, control cables, Ethernet, and fiber optic lines. The technical content of IEC publications is kept under constant review by the IEC. Please first log in with a verified email before subscribing to alerts. It instructs us on how to construct them, where to locate them, and how to stuff them with wires without using too much.

Latest Standards for Cable Tray Construction



Designing roof-mounted strut and cable tray systems for real-world conditions means accounting for snow, ice, and wind in a structured calculation process. ASCE 7-22 shifts snow load design to a ...



Most recent NECA/NEMA 105-2024 Standard for Installing Metal Cable Tray Systems This standard addresses shipping, handling, storage, and installing cable tray systems and provides information on ...



Cable tray length is selected based on the load to be supported, the distance between the supports (also referred to as the span), and handling and installation constraints.



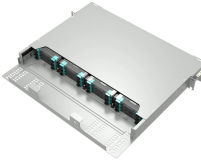
Master NEC Article 392 with our comprehensive guide. Learn essential cable tray requirements for installation, grounding, and fill capacity to ensure full electrical compliance.



Cable tray system design shall 269 comply with National Electrical Code® (NEC®) Article 392, NEMA BI-50015 (formerly VE 1), and NEMA 270 FG 1, and follow safe work practices as described in NFPA ...



This document specifies requirements and tests for cable tray systems and cable ladder systems intended for the support and accommodation of cables and possibly other electrical equipment in ...



This article provides a comprehensive framework that governs various aspects of cable tray installations, including the types of cables that are deemed acceptable for use, requirements for ...



When specifying cable trays for an international project, the first question is always: Which standard applies?



The Cable Tray Institute is making available the current edition of this practical guide for the proper installation of aluminum or steel cable tray systems. These guidelines will be useful to engineers, ...



NEMA VE 1-2017 Specifies requirements for metal cable trays and associated fittings designed for use in accordance with the rules of Canadian Electrical Code, Part I and the National Electrical Code®



NEMA BI 50051 standard for Cat Van Loi wire mesh cable tray is the standard for Metal Cable Tray Systems. The latest edition (2024) defines strict requirements for: Construction, materials, and load ...



One of the most recognized frameworks globally is the IEC standard for cable tray systems. This standard ensures safety, durability, and performance ...



The Cable Tray Institute (CTI) was founded in 1991 to support the cable tray industry by engaging in research, development, education, and the dissemination of ...

Contact Us

For more information, pricing, or custom energy solutions, please contact us:

Website: <https://www.gdroofing.co.za>

Email: sales@gdroofing.co.za

Phone: +27 72 418 9365

Address: 22 Electron Avenue, Isando, Johannesburg, 1600, South Africa

This document is for informational purposes only. Specifications subject to change without notice.

