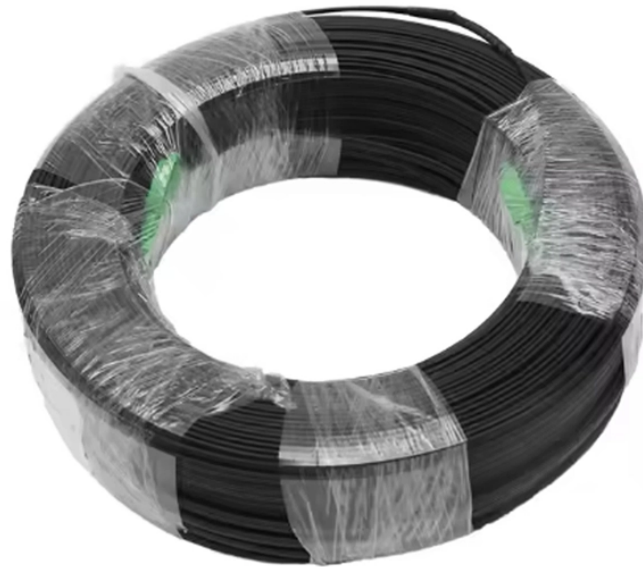


Level 1 lightning protection for distribution boxes



Level 1 lightning protection for distribution boxes



1. Higher protection: The surge protector uses advanced discharge technology and efficient absorption materials, which can quickly absorb the high-energy voltage caused by lightning ...



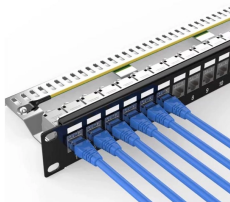
Single-pole arrester in the specification class C for the protection of electrical consumer installations and equipment against overvoltage caused by distant lightning strikes or switching operations.



According to our division of lightning protection zones, lightning arresters can be divided into three levels of protection. At the interface between the direct lightning protection zone and the first shielding ...



Type 1 surge products are permanently connected devices that are installed before or after a main disconnect. These devices can be used as replacements for what were previously known as ...



Type 1, Type 2, and Type 3 SPD (also called Class I, Class II, Class III) are the three surge protective device types defined in IEC 61643-11, each ...



High levels of protection and advanced features including surge counters and performance monitoring, designed to provide the greatest level of protection where surge damage would lead to excessive



Type I arresters are installed at the interfaces of lightning protection zones LPZ 0 and LPZ 1 in the building feed-in / main distribution board. They conduct the lightning current directly to earth and ...



Type 1, Type 2, and Type 3 SPD (also called Class I, Class II, Class III) are the three surge protective device types defined in IEC 61643-11, each covering a different installation point and ...



Type 1 surge protectors are suitable for installation at the main distribution board where the power supply enters a building or facility. They can protect the entire power system from damage ...



The Level 1 surge protection device is designed to withstand high-current surges from direct lightning strikes or induced lightning. It diverts most surge current to the earth.



Key Takeaways Stop the stress of external power threats by learning how a type 1 surge protection device acts as your facility's primary line of defense. Clear the confusion between Type 1 ...

Contact Us

For more information, pricing, or custom energy solutions, please contact us:

Website: <https://www.gdroofing.co.za>

Email: sales@gdroofing.co.za

Phone: +27 72 418 9365

Address: 22 Electron Avenue, Isando, Johannesburg, 1600, South Africa

This document is for informational purposes only. Specifications subject to change without notice.

