

Libya commissioning total packaged optical 800G



Libya commissioning total packaged optical 800G



POET is a design and development company offering high-speed optical modules, optical engines and light source products to the artificial intelligence systems market and to hyperscale data ...



A comprehensive list of common English words for vocabulary enhancement, language learning, and educational purposes.



Cost, ROI, and total ownership: module price vs commissioning risk For procurement planning, the line item cost of 800G transceivers is only one part of total cost of ownership (TCO). ...



Our simple and intuitive online search system provides members with quick and easy access to real-time procurement opportunities from across Libya, spanning diverse industry segments.



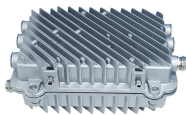
This is a comprehensive database of all tenders and contracts issued by government departments, local authorities and other public entities in Libya. The database is updated on a daily basis to ensure that ...



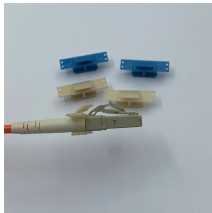
In scope for the 800G Coherent project is to define interoperable 800G coherent line specifications for campus and DCI applications. The resulting Implementation Agreement (IA) will:



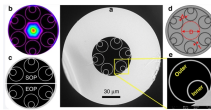
Despite these improvements, the continuous growth of Telco and CIP optical networks are already pressing operators to upgrade their networks to higher data rates as soon as the technology is ...



By understanding the key developments for 400G and 800G, as well as the standards planned for 800G and 1.6T, data center operators can ensure that they benefit from 800G upgrades as solutions evolve.



High-Speed Interconnects: Backend network requires high speed 100G/200G or 800G optics to connect servers and network switches. These high bandwidth connections are essential for handling the data ...



Their massive data centers rely on metro and long-haul optical networks that demand steady bandwidth upgrades and backward-compatible hardware. With traffic growing at more than ...

Contact Us

For more information, pricing, or custom energy solutions, please contact us:

Website: <https://www.gdroofing.co.za>

Email: sales@gdroofing.co.za

Phone: +27 72 418 9365

Address: 22 Electron Avenue, Isando, Johannesburg, 1600, South Africa

This document is for informational purposes only. Specifications subject to change without notice.

