

Lighting Distribution Box Installation Procedure



Overview

Practice good wiring: secure grounding, neat cable management, proper insulation, and correct wire gauge and breaker size. Include protection devices like breakers, fuses, and surge protectors—each circuit should have its own protection. Comply with standards: Follow NEC, IEC, or local. Applications - The minimally invasive retrofit kit enables the opportunity existing remote power infrastructure cross arm, & wiring) providing the total cost of ownership. Failure to strictly adhere to the warnings and cautions as well as the installation instructions may result in serious personal. Strictly speaking, the word “Distribution Box (D-box)” can refer to two categories: electrical distribution boxes and septic tank distribution boxes. This article mainly talks about the first one. An electrical distribution box, also known as a power distribution box, panelboard, or consumer unit. Ensure safe placement: install in dry, accessible areas with good ventilation and at appropriate height (typically ~1).

Lighting Distribution Box Installation Procedure



Learn the basic lighting and socket installation procedures, including wiring, mounting, testing, and safety recommendations, to ensure that electrical ...



Learn how to install a distribution box safely and correctly. Covers wiring, placement, standards, and expert tips for a compliant setup.



Find out how to properly wire an electrical panel box with a comprehensive diagram and step-by-step instructions.



Learn the basic lighting and socket installation procedures, including wiring, mounting, testing, and safety recommendations, to ensure that electrical installations for residential, ...



Proper installation of a distribution box requires careful planning and adherence to electrical codes. While major installations should always involve qualified electricians, understanding ...



Learn how to properly wire a lighting junction box for safe and efficient electrical connections. Step-by-step guide for professional results.



This article provides a detailed overview of the entire process of installing a distribution box, from pre-installation preparation to post-installation maintenance, and summarizes common ...



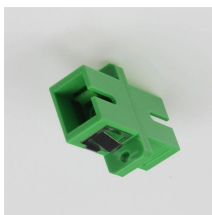
In this article, we will explore the specifications for household distribution boxes and provide guidance on how to install them correctly. Specifications of Household Distribution Boxes



Before starting the installation, finding a proper place for putting the distribution box is crucial, because it largely decides the safety and convenience of maintenance. Let's see what factors ...



Read and understand this entire manual and any additional site-specific installation documents before attempting to assemble, install, or operate the luminaire. If you have any questions regarding the ...



For a good deployment, it's important to know the basic rules of installation, pick the right parts, and follow the manufacturer's directions. When done right, these steps keep both the workers and the ...

Contact Us

For more information, pricing, or custom energy solutions, please contact us:

Website: <https://www.gdroofing.co.za>

Email: sales@gdroofing.co.za

Phone: +27 72 418 9365

Address: 22 Electron Avenue, Isando, Johannesburg, 1600, South Africa

This document is for informational purposes only. Specifications subject to change without notice.

