

Lightweight Aluminum Alloy Cable Management Rack Factory



Lightweight Aluminum Alloy Cable Management Rack Factory



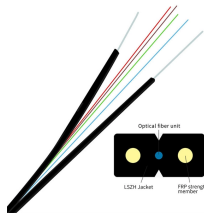
Affordable Wire Management provides innovative, precision-engineered cable management solutions that are durable, reliable and safe.



Made from extruded aluminum, they are very lightweight, weather-resistant, and strong enough to handle tremendous loads without sagging. They can be used indoors or outdoors, ...



A & J Manufacturing is a WOSB manufacturer of aluminum electronic enclosures & racks. Contact us today for more information on our electronic enclosure products.



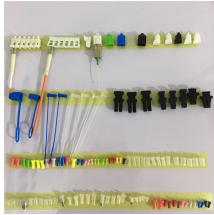
Aluminum Cable Tray systems are lighter than steel cable tray and Certified CSA Cable Tray, UL listed, NEMA and certified. Because of their lighter weight aluminum cable trays are easier to install than ...



PowerTray is a versatile Aluminum Ladder Tray system available in a broad range of NEMA and CSA Load classes. A full line of accessories, covers, and radius fittings are available including “snap-in” ...



Affordable Wire Management provides innovative, precision-engineered cable management solutions that are durable, reliable and safe.



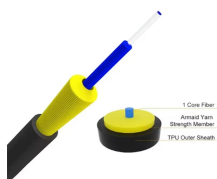
A & J Manufacturing is a WOSB manufacturer of aluminum electronic enclosures & racks. Contact us today for more information on our electronic enclosure products.



The aluminum cable tray is a lightweight, durable, and cost-effective solution used for organizing and safely carrying electrical and data cables. With easy installation and strong corrosion resistance, it is ...



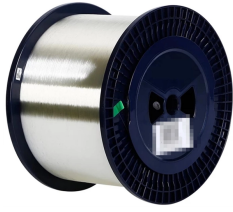
TechLine Mfg. offers Snap Track, an innovative channel type cable tray that is UL classified with patented push-pin assembly. Request a quote today!



Our Aluminum Alloy Cable Tray is engineered for superior performance in modern cable management systems. By utilizing a high-strength aluminum-magnesium-silicon alloy, we achieve an excellent ...



Available in aluminum, stainless, and carbon steel like every JES product, our cable management systems vary in height and configuration to create invaluable efficiency behind your enclosures.



The AH Cable Ladder System is designed for lightweight handling, installation, and long corrosion resistance in mind. As well as having lightweight material properties, aluminium is very resistant to a ...

Contact Us

For more information, pricing, or custom energy solutions, please contact us:

Website: <https://www.gdroofing.co.za>

Email: sales@gdroofing.co.za

Phone: +27 72 418 9365

Address: 22 Electron Avenue, Isando, Johannesburg, 1600, South Africa

This document is for informational purposes only. Specifications subject to change without notice.

