

Linear Optical Isolation Amplifier



Linear Optical Isolation Amplifier



The AD215 is a high speed, two-port isolation amplifier, designed to isolate and amplify wide bandwidth analog signals. The innovative circuit and transformer design of the AD215 ensures wide-band ...



Isolation amps are good for measuring accuracy over a wide dynamic range, with at least 1,500 volts isolation, so you can measure line voltage at 600 VAC with no problem, and measure the ...



This application note describes isolation amplifier design principles for the LOC Series linear optocoupler devices. It describes the circuit operation in photoconductive and photovoltaic modes and provides ...



Learn how to maximize high-voltage power conversion and motor-control efficiency with integrated isolated voltage sensing.



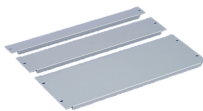
Analog Devices' isolated amplifiers are high performance components designed to safely and accurately measure analog signals across high voltage domains. These amplifiers combine precision analog ...



Mouser offers inventory, pricing, & datasheets for Optically Isolated Amplifiers.



Choose the right analog optoisolator for isolated sensing and control. Compare linear optocouplers vs isolation amps, drift, bandwidth, CMTI, and layout tips.



Optical components are carefully matched and the amplifier is actively laser-trimmed to assure excellent tracking and low offset errors. The circuit acts as a current-to-voltage converter with a minimum of ...



Isolation amplifiers using the IL300 are not plagued with the drift problems associated with standard phototransistors. The following analysis will show how the servo operation of the IL300 eliminates the ...



The development of the linear optical coupler is traced. Optical and electronic circuit techniques are presented that combine, for the first time, precision performance with miniature packaging.

Contact Us

For more information, pricing, or custom energy solutions, please contact us:

Website: <https://www.gdroofing.co.za>

Email: sales@gdroofing.co.za

Phone: +27 72 418 9365

Address: 22 Electron Avenue, Isando, Johannesburg, 1600, South Africa

This document is for informational purposes only. Specifications subject to change without notice.

