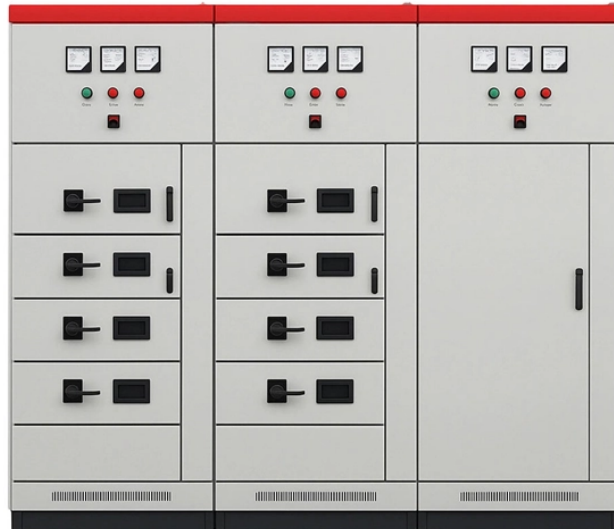


## Locating optical cable line faults



### Overview

Locating fiber cable problems can be a real challenge for a technician! Before accessing a cable, some important things may need considering: 1. Is the situation all an initial install, or is (some of) the lin.



## Locating optical cable line faults



The table below presents the primary faults of fiber optic cables. By employing an enumerative method based on the collected fault information, the fault can be comprehensively determined.



Positioning and identifying failures in an optical fiber cable line is crucial for maintaining the integrity and efficiency of the network. The following are key methods and techniques used for optical ...



Application note: Equipment and techniques for locating fiber optic cable faults.



An optical visual fault locator is a simple yet powerful tool for identifying problems in fiber optic cables. It provides a quick way to troubleshoot and pinpoint faults such as breaks, bends, or ...



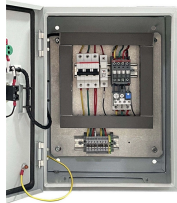
A visual fault identifier or visual fault locator (VFI / VFL) is a visible red laser designed to inject visible light energy into a fiber. Sharp bends, breaks, faulty connectors and other faults will “leak” red light ...



Discover how Visual Fault Locators (VFLs) simplify fiber optic troubleshooting. Learn key features, use cases, and tips for accuracy and safety in our expert guide.



This document helps in finding out the most accurate sheath distance where fault has occurred in the cable. The method is suitable for all types of optical fiber cables and is independent of index of ...



Through the analysis of real-time fault data, combined with the visual display of GIS map, the precise location of the fault point is realized, and the processing efficiency of the cable line fault is ...



Pinpoint fiber faults and identify cables in seconds with our smart optical cable locator – non-destructive, multifunctional, and cloud-connected for ultra-efficient field operations.



Finding a break in a fiber optic cable can be challenging but is essential for maintaining a stable network. Here's a guide to identifying the location of a break in a fiber optic cable, including ...

## Contact Us

For more information, pricing, or custom energy solutions, please contact us:

Website: <https://www.gdroofing.co.za>

Email: [sales@gdroofing.co.za](mailto:sales@gdroofing.co.za)

Phone: +27 72 418 9365

Address: 22 Electron Avenue, Isando, Johannesburg, 1600, South Africa

This document is for informational purposes only. Specifications subject to change without notice.

