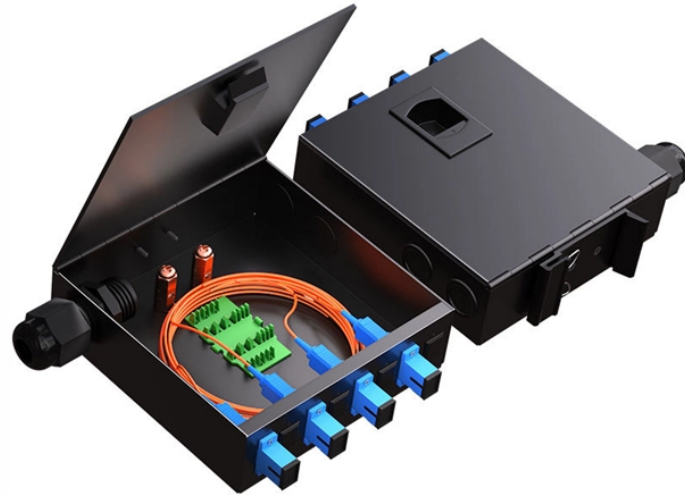





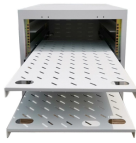


Low Insertion Loss Splitter for Wind Power Generation G 652D



Low Insertion Loss Splitter for Wind Power Generation G 652D

 <p>8-Port PLC Fiber Splitter Box 12-Port SC Fiber Splitter Box Size: 280*120*75mm Material: ABS, PA66</p>	<p>No point discontinuity greater than 0.05 dB at 1310 nm and 1550 nm.</p>
	<p>1.1.1 Norms JXT fibre complies with or exceeds the ITU-T Recommendation G.652.D and the IEC 60793- 2-50 type B1.3 Optical Fibre Specification.</p>
	<p>Prysmian-Enhanced-Single-Mode-G-652-D- Datasheet - Free download as PDF File (.pdf), Text File (.txt) or read online for free.</p>
	<p>YOFC FullBand ® Ultra low loss single mode fibre is made by YOFC unique pure silica core technology, it offers 15% lower attenuation than typical G.652.D fibres, with a maximum attenuation of 0.17 ...</p>
	<p>Our 1×8 PLC Splitter uses advanced planar lightwave circuit (PLC) technology to ensure low insertion loss, excellent signal uniformity, and long-term performance.</p>



Planar Lightwave Circuit (PLC) splitter provides highly stable splitting performance superbly across temperature and wavelength in low insertion loss, low input polarization sensitivity, excellent ...



Planar Lightwave Circuit (PLC) splitters are specifically designed for Fiber Optic Network applications. PLC splitters are available in the form of compact component type, ABS box type and rack mount ...



This method uses the variation with wavelength of the transmitted power of a short length of the fibre under test, under defined conditions, compared to a reference transmitted power.



PLC Splitter features guaranteed performance specifications and high reliability that surpass Telcordia requirements and is suitable for many singlemode optical splitting applications.



The fibre fully complies with or exceeds the ITU-T Recommendation G.652.D, G.657A& B and the IEC 60793-2-50 type B.1.3 Optical Fibre Specification and is backwards compatible with all other G.652 ...

Contact Us

For more information, pricing, or custom energy solutions, please contact us:

Website: <https://www.gdroofing.co.za>

Email: sales@gdroofing.co.za

Phone: +27 72 418 9365

Address: 22 Electron Avenue, Isando, Johannesburg, 1600, South Africa

This document is for informational purposes only. Specifications subject to change without notice.

