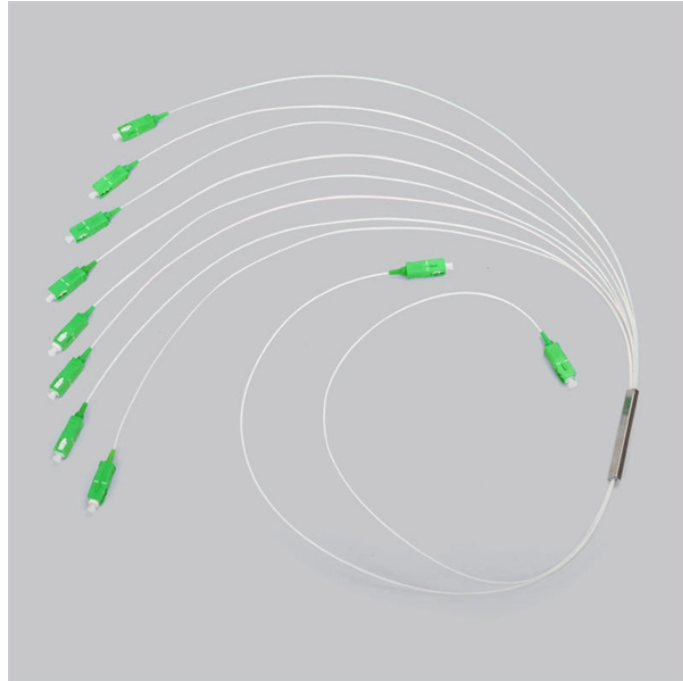


# MPO jumper wire solidification



## Overview

This paper examines the critical parameters, including the spring force and ferrule geometry, needed to achieve physical contact for MT-16 based ferrules and to ensure optimal insertion loss and return loss performance for mated connector assemblies. Prefab cable systems and parallel array transmission systems for 40G/100G on multimode fiber generally use a multifiber array connector called a MPO or sometimes by a trade name MTP. These connectors use a large rectangular molded plastic ferrule with one or more rows of 12 fibers or 16 fibers. MPO Cable Assemblies Features • High density, plug and play fiber optic interconnects • Pre-terminated cable assemblies eliminate field termination time and guarantee optical performance • Available with a wide variety of cable and connector options • Standard and low loss connectors • Single-mode. MPO (Multi-fiber Push On): MPO is a standard multi-fiber push-pull optical connector interface designed for high-density fiber connections. It provides stable connectivity and fast plug-and-play operation. A2 MPO16 (Non-Pinned) Push Pull to MPO16 (Non-Pinned) Push Pull, Fiber Trunk Cable Assembly, 48-Fiber, LSZH B2ca, Method A Ultra Low Loss (ULL) Singlemode G.

## MPO jumper wire solidification



Learn the differences between MTP®/MPO jumper, harness, and trunk fiber cables. This guide explains their structures, applications, and how to choose the right solution for high-density ...



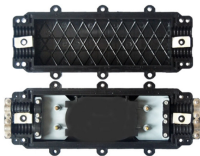
Learn about all things MPO, such as fiber counts, color coding, and polarity considerations.



A total of ten MPO jumper samples were terminated and polished using conventional MT ferrule processes for each 10N and 20N spring forces, and endface geometry measurements were performed.



Using the supplied USB to micro USB cable, attach the MPOLP to a PC with the latest version of FiberChek Pro running on it. FiberChek Pro will automatically recognize the MPOLP device and ...



With high-density MTP/MPO and LC connectors, multiple cable configurations and integrated specialty components, Molex Data Center Cable Solutions support the integration of high-performance ...



An introduction to MPO/MTP® jumper, harness, and trunk cables, explaining their differences and applications in data center and AI network.



MPO cable assemblies provide a high performance plug-and-play solution for premise installations where space is a premium. Used to interconnect panels or cassettes, the small diameter MicroCore® ...



The complexity of testing MPOs with a single channel OLTS or light source and power meter makes these test sets highly desirable for the tech working with MPO cable plants.



Understanding the basis of MTP®/MPO patch cables, different MTP®/MPO cable types, and key applications is essential for designing a reliable and scalable MTP®/MPO cabling system.



Explore CommScope's MPO Cable Assemblies—designed for high-speed data transmission and efficient connectivity. Our premium quality fiber cable assemblies include InstaPATCH, MPOptimate, ...

## Contact Us

For more information, pricing, or custom energy solutions, please contact us:

Website: <https://www.gdroofing.co.za>

Email: [sales@gdroofing.co.za](mailto:sales@gdroofing.co.za)

Phone: +27 72 418 9365

Address: 22 Electron Avenue, Isando, Johannesburg, 1600, South Africa

This document is for informational purposes only. Specifications subject to change without notice.

