

# MTP Adapter Module Intelligent Manufacturer



## Overview

MTP is a non-proprietary interface standard that enables manufacturers to store the complete functional description of a PEA on the plant module itself. Modularization is revolutionizing the process industry by offering significant advantages, particularly through the integration of package units using Module Type Packages (MTP). This approach is already widespread in sectors such as the pharmaceutical, biotech and food industries and is. Modular process plants will have pre-automated modular units that can easily be added, arranged and adjusted according to the production needs. This is achieved through the Module Type Package (MTP), a standardized methodology enabling interoperability between any module and orchestration system. Modular production with Module Type Package (MTP) Easy module engineering and faster time-to-market: MTP lets you respond efficiently and flexibly to customer requirements. It makes it possible for any higher-level automation system that “speaks” MTP to accurately control a specific module, whether it's a tank or mixer. The module/plant. Modular automation has rapidly gained dominance, because systems consisting of multiple standalone modules allow much faster and more flexible operation than conventional

systems designed from individual parts - for both module builders and plant operators. The MTP ® connector design offers novel patented features, enhanced precision, proven reliability, and significant performance improvements compared to the standard MPO.

## MTP Adapter Module Intelligent Manufacturer



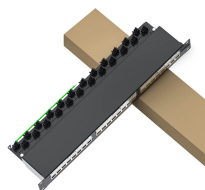
MTP is a non-proprietary interface standard that enables manufacturers to store the complete functional description of a PEA on the plant module itself. This includes the description of ...



The MTP ® connector design offers novel patented features, enhanced precision, proven reliability, and significant performance improvements compared to the standard MPO connector format.



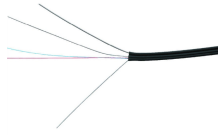
Together with NAMUR and ZVEI, WAGO has paved the way for the “Module Type Package” (MTP). With its MTP solutions, WAGO can help you take advantage of these opportunities and make your ...



Recognizing the growing call to address these concerns, multiple organizations and companies in the process automation industry developed a technology standard called Module Type Package (MTP).



The Module Type Package (MTP) is a cross-manufacturer standard that enables the standardized and manufacturer-independent integration of system modules into automation systems.



The MTP contains all necessary information to integrate a module into a modular plant, such as the communication, the services, a human machine interface (HMI) description and maintenance ...



The module/plant builder supplies a pre-tested, automated and executable module to the plant operator which ensures a faster commissioning and error free start-up at customer site.

## Contact Us

For more information, pricing, or custom energy solutions, please contact us:

Website: <https://www.gdroofing.co.za>

Email: [sales@gdroofing.co.za](mailto:sales@gdroofing.co.za)

Phone: +27 72 418 9365

Address: 22 Electron Avenue, Isando, Johannesburg, 1600, South Africa

This document is for informational purposes only. Specifications subject to change without notice.

